

The Village Courier



national accelerator laboratory

Operated by Universities Research Association Inc.
Under Contract with the United States Atomic Energy Commission

Vol. 5 No. 39

November 1, 1973



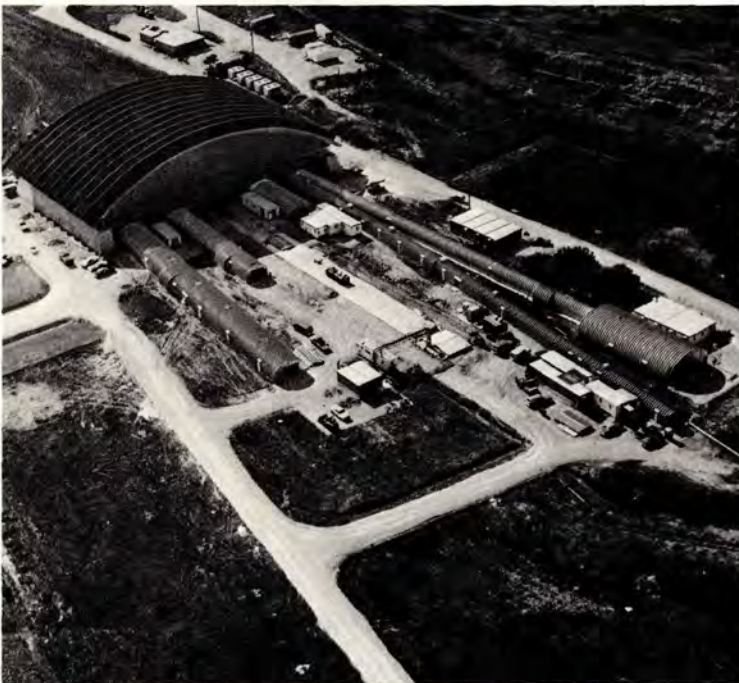
...Looking down the NAL experimental lines from the Central Laboratory area...

NAL... "AN EXCITING PLACE..."

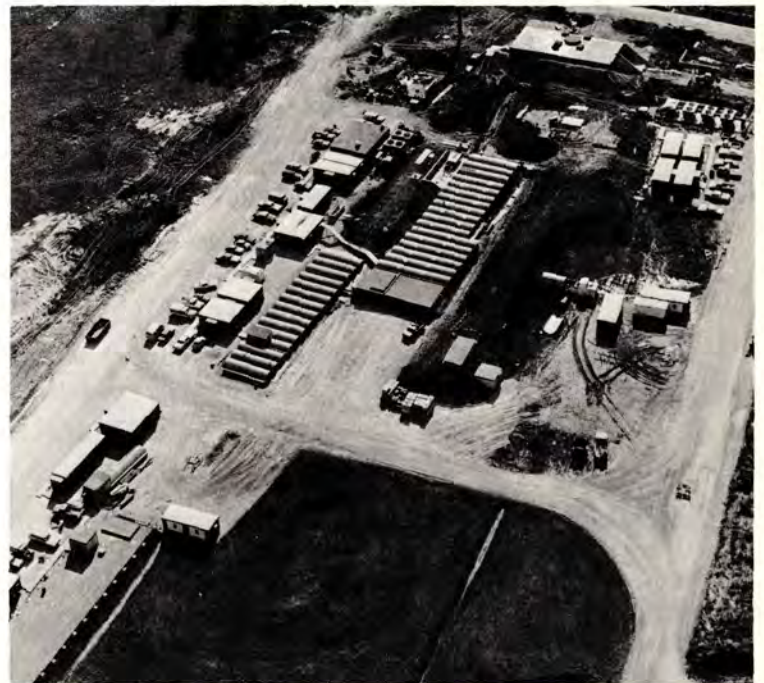
Robert Bacher, president of the Universities Research Association, Inc., after spending two days visiting the National Accelerator Laboratory recently, described the Laboratory as an "exciting place now." He referred to the activity connected with the 32 experiments now in various stages of operation and preparation at NAL. Three external experimental areas and the Internal Target Section of the Main Ring accommodate diverse experimental installations, each studying the hidden world inside the heart of the atom. Fourteen experiments have been completed, plus nineteen emulsion exposures.

The longest of the three external lines is the Neutrino Line, $1\frac{1}{2}$ miles from the switchyard where it leaves the Main Accelerator, to the end, at the Bubble Chamber Area. Branching to the left of the Neutrino Line is the Meson Line; to the right, the Proton Line.

NAL photographer Tony Frelo photographed the experimental areas from the air on October 18, 1973, providing an album of photos of the NAL experimental facilities as they now exist.



...Meson Line Detector Building and enclosures, home of ten experiments...



...Scalloped roofs cover the experimental pits of the Proton Area where 4 experiments run...

(Continued on Page 2)



...The Bubble Chamber Area. Four experiments are currently taking data in the 30-inch Chamber; seven are ready to begin. Seven neutrino experiments and an engineering run have been approved for the 15-Foot Chamber. Neutrino experiment #1A is also housed in this area...



...In the Muon Area, located about half-way down the Neutrino Line, three experiments run regularly and will for an indefinite time. The Chicago cyclotron magnet is located here...

* * * * *

UNIVERSITY OF CHICAGO OFFERS PHYSICS COURSES

The Department of Physics of the University of Chicago will offer nine advanced courses, covering all aspects of elementary particle physics, during the academic year 1973-74. The courses are:

- Physics 467-8-9 Phenomenological Particle Physics I, II, and III. (Offered autumn, winter, spring quarters, M-W-F, 11:30 - 12:30.) Instructor for 467-8, Prof. Robert D. Carlitz; Instructor for 469, Prof. Wu Ki Tung.
- Physics 487-8-9 Theoretical Particle Physics I, II, and III. (Offered autumn, winter, spring quarters, T-Th, 11:30 - 1:00.) Instructor for 487, Prof. Reinhard Oehme; Instructor for 488-9, Prof. Marc Kislinger.
- Physics 463 Introductory Particle Physics (taught in the spring quarter). Instructor, Prof. James W. Cronin.

Each quarter is eleven weeks long. Starting and ending dates are:

- Autumn quarter - October 1 to December 15, 1973
Winter quarter - January 7 to March 23, 1974
Spring quarter - April 1 to June 15, 1974

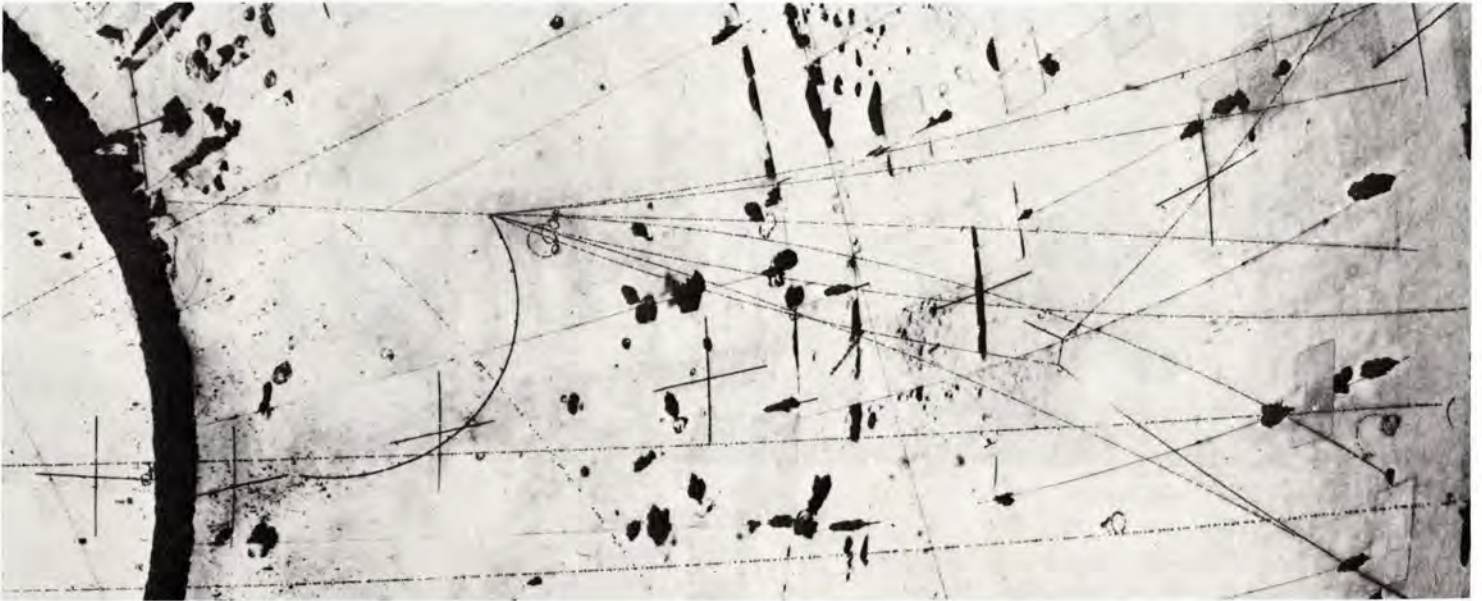
Any qualified physicist may attend these courses by registering as a student-at-large. Further information may be obtained by calling Sol Krasner, 753-8302.

* * * * *

FOX MEMORIAL FUND ESTABLISHED

Mrs. Margaret Fox has agreed to setting up a memorial fund in the name of her son, Donald Jensen Fox, either at the Lyric Opera House, Chicago, or for undergraduate prizes in the Physics Department at Michigan State University. Dr. Fox died on September 30 as he rode his bicycle from the National Accelerator Laboratory to his home in North Aurora. Contributions to the Fox memorial may be made by check payable to "Donald J. Fox Memorial Fund," c/o K. W. Chen, Department of Physics, Michigan State University, East Lansing, Michigan 48823.

* * * * *



...High energy pion interaction in 15-Foot Bubble Chamber photographed during test run in the week of October 22, 1973. The magnetic field for this picture was about 10 kilogauss. Partial black circle at left is piston...

* * * * *

IN THE NAL AREA

...The Waubonsee College Society for Indian Studies has launched its 1973-74 membership drive. The Society was organized several years ago by citizens in Waubonsee's district who are interested in the archaeology, anthropology, and history of North American Indians. Special attention is devoted to those Indians who lived in the Upper Mississippi-Ohio Valley. The Society promotes its interests by sponsoring a lecture series. In the past, the Society has sponsored the appearance of such experts as Richard Leaky, Dr. Margaret Kimball Brown, Dr. Stuart Struever, and Dr. Virgil Vogel.

Membership in the Society is open to anyone interested in the archaeology, anthropology and history of the American Indian. Special emphasis is placed on the collection and display of artifacts. Membership dues are one dollar. For additional information, call Dr. Hauser at Waubonsee, 466-4811. Waubonsee is located in Sugar Grove, Ill., reached by taking E-W Tollway west to Sugar Grove exit, then north on Highway 47 to the campus.

...West Suburban Symphony Orchestra's first concert of the season is Sunday, November 4 - 4 p.m., Hinsdale Township High School, 55th Street at LaGrange Road. Tickets are \$1.75 available at the Visitors Center. Children under 12, free. Season tickets are also available. Program includes Beethoven 8th symphony and a wide variety of short classical numbers.

* * * * *

:: H E L P ::

**PROTECT YOURSELF --- PROTECT YOUR FAMILY
HELP YOUR FELLOW EMPLOYEES
B L O O D D O N A T I O N D A Y
MONDAY, NOVEMBER 12**

Coverage for all NAL employees depends on YOUR HELP. Two-hundred (200) pints needed. Members of your family over 18 may contribute on your behalf. Make your HELP appointment with Dorothy Poll, Ext. 3232...

:: I M M E D I A T E L Y ::



...Members of the National Accelerator Laboratory Women's Organization (NALWO) executive board met recently to plan 1973-74 activities. They are (L-R): Betty Snowdon, Ellen Ljung, Jane Wilson, Nancy Stiening, Mary Lou Satti, Mary Fray, Mary Ann Ryk, and Ulla Baker. The group is open to NAL wives and wives of visiting experimenters. Information about NALWO activities is available at the NAL Visitors Center, Ext. 3560.

NALWO ACTIVITIES

- FRIDAY, November 2 ----- Tour of Lizzadro Museum of Lapidary Arts in Elmhurst. Car pools leave Village Cafeteria after lunch at the cafeteria; reservation necessary for ride. Call Nancy Carrigan, 393-1361.
- FRIDAY, November 9 ----- Newcomers Pot luck, Village Cafeteria. Call Ellen Ljung, 231-8513 or Nancy Stiening, 879-1980 or Ext. 3291 for further information.
- WEDNESDAY, November 28 - Christmas Ornaments Workshop - Village Barn - 9:30 to 11:30 a.m. Sign up with Ellen Ljung, 231-8513.
- WEDNESDAY, December 5 -- Cookie Exchange - Village Barn - 10:00 a.m. to noon. Bring three dozen of your favorites, take variety home.
- SATURDAY, December 8 --- Gourmet Group Christmas Party - Tom and Sonia Collins' home, 413 S. York Road, Elmhurst. "Recipes Around the World." Call Mary Otavka, 969-6199 for recipes.

CLASSIFIED ADS

- FOR SALE - '69 Pontiac Catalina, hdtop, fac. air, excel. cond., \$1150 or offer. Call Ted Wilson Ext. 3173 or 469-3897.
- FOR SALE - '67 Ford Galaxie-500, V-8, AT & PS, new brakes, shocks, exhaust system & gd. tires, Eng. & body good, 17+M.P.G., eng. block water heater, \$600. Call Larry Sobocki, Ext. 3043.
- FOR SALE - '67 Olds F85, 2 door, P/S, new shocks/battery, excel. tires, \$460 or best offer. Call Rainer Kotthaus, Ext. 3059 or 231-0391.
- FOR SALE - '64 Chevy Sta. Wagon, air-ride shocks, running condition, \$75. Call Harold Hann, Ext. 3227 or 665-2984.
- FOR SALE - Craig auto plug-in & out cassette player, auto reverse, only 4 mos. old, \$65. Also, an AM/FM/Short Wave (in dash bd.) radio \$25. Call J. Jackson, Ext. 3205 or 426-6050.
- FOR SALE - Rupp Go Cart, 3½ hp. eng., drum brakes, 2 wheel drive, new clutch, gd. cond. \$90 or best offer. Call Paul Kampikas TR 9-1712 after 5 pm.
- FOR SALE - Bow & arrow, 46 lb. pull, has 9 target, 6 field & 1 fishing arrow & quiver, \$65. Call Betty Kastner, Ext. 3531 or 3593 after 1:30 pm.
- FOR SALE - German shorthaired pointer puppies. Call Jim Heintz ext. 3467. After 6:00 pm 838-0563.
- NEEDS A HOME - 2½ yr. old Sheltie & Beagle (shorthaired), and a 2 yr. old Terrier & Beagle. Both are housebroken, well trained & gd. w/children. Both to give away. Call W. Pelczarski Ext. 3160 or 323-7861 or 323-8586.