


The Village Crier

 national accelerator laboratory

Operated by Universities Research Association Inc.
Under Contract with the United States Atomic Energy Commission

Vol. 4 No. 21

May 25, 1972

PROGRESS REPORT - MAY 15 THROUGH MAY 20, 1972

The accelerator worked up to 80 BeV during the week after a shutdown the previous week. There was a distinct improvement in beam orbit due to horizontal realignment of some quadrupole magnets during the shutdown. Many extraction studies were carried out and are continuing. The 8 BeV transfer line is now a part of the Main Ring control system. At week's end, beam intensity was greatly improved due to re-tuning of the Main Ring R.F. system.

TORNADO SEASON SAFETY RULES

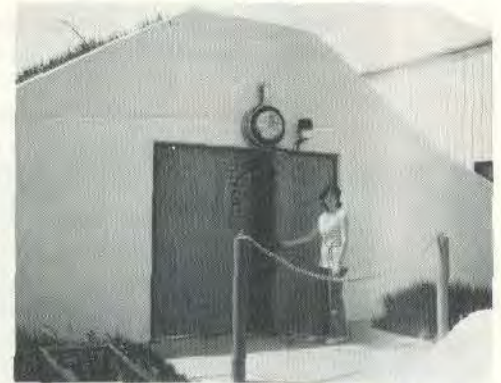
When a tornado approaches, your immediate action may be a matter of life or death. Take a few minutes RIGHT NOW to think about what you would do if an emergency develops so that you can act promptly and correctly, without panic.

General Instructions: When weather conditions are conducive to the development of tornadoes, a TORNADO WATCH message is announced over area radio broadcasting stations. When a tornado is sighted in the surrounding area, a TORNADO WARNING (TORNADO ALERT) message is broadcast and persons are instructed to seek shelter.

In general, when you are away from the Laboratory, you should seek inside shelter, preferably an underground excavation or a steel framed or reinforced concrete building of substantial construction. The southwest corner of a basement is a good shelter area. Leave windows on the east and north side of the building partially open and stay away from any windows. If time doesn't permit reaching a designated shelter, get beneath a desk or work bench; or, if out in the open, seek shelter in the nearest depression or ditch. Crawl into a culvert if possible. Avoid auditoriums and barns. Large open area buildings are more susceptible to destruction. Avoid cars and trailers. These are easily picked up and overturned.

NAL TORNADO EMERGENCY PROCEDURE: When a TORNADO WARNING message is received at the NAL switchboard, Emergency Personnel will be sent out to observe the surrounding sky. If a tornado cloud is sighted, Emergency Personnel will instruct the switchboard operator to sound the Civil Defense Sirens, which is the signal to proceed to shelters. Emergency evacuation instructions are posted at doors exiting from NAL buildings. Look for these instructions NOW, and find out what they say. In case of a tornado emergency, go to the designated shelter area immediately after the civil defense siren sounds. (In general, there are four shelter areas in the Village -- the protomain, the protoboost, and the basements of 21 Sauk and Aspen East. In the foot-print area, shelter may be found in any of the basements of the main buildings.)

At the shelter, report to the building warden stationed there; be sure to tell him if/when you leave. If there are no instructions for your area, or if you are confused about what you should do, contact your Section Head or the NAL Safety Office, Ext. 580.



...Barb Perington, Int. Target Section, at entrance of protomain, one of 3 tornado shelter areas in the NAL Village...

REMEMBER!! When CIVIL DEFENSE SIREN SOUNDS, proceed to NEAREST SHELTER area.
When FIRE ALARM sounds, EVACUATE immediate area. OBEY Emergency Warden's Instructions.
ANY QUESTIONS? Call NAL Safety Office, Ext. 580.

BOWLING WINNERS ANNOUNCED

Bowlers at NAL closed their 1972 season with a banquet at the Purple Cow restaurant, North Aurora, on Thursday, May 18. Twelve teams competed this season in the Friday night matches at Bowling Green alleys, West Chicago. Season winners are:

First Place Team: "4 + 1", Ed LaVallie (Accel. Sect.), captain;
R. Wagner, Personnel; S. Misek, Accounting, T. Blachford,
Plant Maint.; S. Poll, husband of D. Poll, R.N.

Second Place Team: LATE FRAMERS, Gene Stark (Plant Maint.), captain;
S. Mataya (Mrs. Ralph, Farm Mgmt.); H. Landers, Accel. Sect.;
J. Thomas, Purchasing; E. Barrick, Plant Services.

Third Place Team: QUICKIES, Mildred Meyer (Personnel), captain;
B. J. Burke, B. Wagner, M. Hitts, S. Cuomo, Food Services.

Trophies also were awarded for the following:

Women's High Game:	Joy Thomas, Purchasing (207)
Men's High Game:	Al Guthke, Switchyard Group (256)
Women's High Series:	Mildred Meyer, Personnel (510)
Men's High Series:	Al Guthke, Switchyard Group (642)
Most Improved Woman Bowler:	Diane Frederick (DUSAF)
Most Improved Male Bowler:	James Hanks, Physics Dept.

NAL'S GEODESIC DOME FEATURED IN BOSTON MUSEUM



NAL's geodesic dome was featured in the recent "Earth Month" observation of the Museum of Science and Hayden Planetarium, Boston, Mass. Brent R. Jackson (Education Associate) is shown here demonstrating use of a "sandwich" panel to a group of young students. Mr. Jackson reports, "We...urged those present to take recycling to heart as a significant way in which individuals can become effective in coping with our 'throw away' way of life."

Photo courtesy of the Museum of Science and Hayden Planetarium, Boston, Massachusetts.

SIGN UP NOW FOR BLOOD DONATIONS

The American Red Cross Blood Mobile Unit will be at the NAL Village Barn to accept blood donations on Thursday and Friday, June 8 and 9. All employees and members of their immediate families are presently covered until September of this year because 20% of the employees donated blood last year. The June donations will go towards coverage for the 1973 year. At least 20% of the employees are needed to donate, or approximately 187 pints.

Interested employees may call either First Aid, Ext. 232 or Personnel, Ext. 396, for applications to donate blood.

Let's give a little!

FAREWELL DINNER TO HONOR KENNEDY C. BROOKS ON JUNE 23RD

AEC staff members are planning a farewell dinner for Mr. Kennedy C. Brooks, Area Manager, who will retire June 30, 1972. The dinner will be held in The Village Barn on Friday, June 23, beginning with a cocktail hour at 7 p.m. Contact Fred Mattmueller or Minerva Sanders, Ext. 281, for reservations before June 2nd. Tickets at \$8.50 per person include free cocktail hour. Cash bar after dinner. Everyone at NAL is invited to attend.

SWIMMING POOL OPERATIONS FOR 1972

(Please post for future reference!)

The Laboratory swimming pool in the NAL Village will be opened for the 1972 season at 9:00 a.m. on Saturday morning, May 27, 1972. Following is current operating information for NAL EMPLOYEES, GUEST and VISITING SCIENTISTS, AEC EMPLOYEES, and DUSAF EMPLOYEES.

POOL SCHEDULE

Weekday Schedule:

6:30 a.m. - 8:00 a.m. Adults only, no lifeguard.
11:00 a.m. - 9:00 p.m. Family swimming, lifeguard on duty.

Weekends and Holidays:

9:00 a.m. - 9:00 p.m. Family swimming, lifeguard on duty.

ADMISSION

Annual Pass: \$20.00 - Family - Includes purchaser, spouse, and all members of their immediate family.

\$16.00 - Married Couple - no children.

\$12.00 - Single Person

Weekly Pass: \$4.00 - Includes purchaser, spouse, and all members of their immediate family.

\$3.00 - Individual

Daily Admission: \$1.00 - Individual basis only - pay to lifeguard on duty.
(Includes guests of NAL-associated persons.)

TO OBTAIN PASSES:

Passes are on sale at Personnel, 21 Sauk and at the cafeterias during lunch hour through May 26th. Be sure to obtain your Annual Family Pass before Memorial Day weekend; without an annual pass, a charge of \$1.00 per person will be made. Annual passes will not be on sale at the pool. They will be on sale again at Personnel after the holiday and throughout the summer.

FOR POOL OPERATIONS INFORMATION: CALL SITE MANAGEMENT, EXTENSION 494.

NAL SUMMER HOLIDAY SCHEDULE

NAL Administration Offices will be closed on Monday, May 29, in observance of Memorial Day.

Other holidays to be observed during the summer months are:

Tuesday, July 4 - Independence Day

Monday, September 4 - Labor Day

DINNER, GAMES, AND PRIZES AT MONTE CARLO NIGHT!

A buffet dinner in the Cafeteria will precede the fun'n games at Monte Carlo Night on Saturday, June 3rd.

Tickets at \$3.50 each include the dinner at 7 p.m. at the Village Cafeteria, and the chance at chuck wheel, roulette, and one-and-under beginning at 8 p.m. at the Village Barn. Cash bar and music for dancing throughout the evening.

Only a limited number of tickets available for supper. For further information call Greg Chartrand, Ext. 207.

SOX-DETROIT GAME TRIP PLANNED

Only 50 tickets available for the Friday, July 7th trip to see the White Sox play the Detroit Tigers. Grandstand seat, bus fare from the Village and return, refreshments on the bus all included in the \$4.00 price. Good chance for a family outing!

Tickets and further information available from Paul Davis, Accounting, Ext. 242, or Eric Jarzab, at Personnel, Ext. 396.

WHOSE TEAM ARE YOU ON?

More players are still needed in the NAL Softball League. Games will be played on Mondays and Wednesdays, at 5 p.m. and 7 p.m. The first games will be played June 5th. Also need umpires; \$5 per game.

Get in touch with Ed Stitts, Ext. 534, to sign up and get further information.

NALWO ANNUAL TEA JUNE 7

NALWO's Annual Dessert-Tea will be held at the home of Mrs. Jane Wilson on Wednesday, June 7, at 1 p.m. All NAL, DUSAF, and AEC women and visitor's wives are cordially invited to attend. This is a delightful opportunity for NAL women to meet, exchange ideas and information, and enjoy a most pleasant afternoon together. A slate of officers for 1972-1973 will be voted upon. For further information, call the Visitors Center, Ext. 560.

CLASSIFIED ADS

FOR SALE - Firestone WhiteW. tires, 8.25-15, 2 ply, good tread. 4/\$20. D. Johnson, Ext. 236

FOR SALE - '68 Volvo, 142S. Very good cond., radials, \$1,300. R. Nissen, 879-2337 or Ext. 534.

FOR SALE - '66 Pont. Cat., 389 Eng., Auto., ps, pb, \$650 or best offer. Ernie, Ext. 210.

FOR SALE - Double mantel Coleman lantern, \$5. Bob Shafer, Ext. 461.

FOR SALE - 6,000 BTU Frig. window A/C, thermostat control, 2 speed, 9.9 amp, \$95; 8,000 BTU GE window A/C, thermostat cont., 3 speed, 7.5 amp, \$135. Both used 1 summer. L. Vonasch, Ext. 765.

FOR SALE - Sears 6,000 BTU window A/C, half price \$90; also Kodak M18 movie camera plus light, \$40.00. 231-8513.

FOR SALE - Geppesen Cr-5 Flight Computer w/case \$5. X-461.

WANTED - Small, portable playpen for 1 mo. camping trip. Could exchange temporarily for larger wooden pen. Call Goldberg, 851-3148.

FREE - Upright piano. You haul. J. Hogan, Ext. 728.

FOR SALE - 16 mo. St. Bernard, female, AKC register. \$100. Call LaDaune, Ext. 555.

FOR SALE - Pure bunnies & guin. pigs. 2/\$3 896-9388.

FREE - Kittens - Call Bess, Ext. 222.

FOR SALE - '67 Bridgestone Motorcycle, 100 cc. 232-4397

The Village Crier is published by the Public Information Office of the National Accelerator Laboratory. Margaret M.E. Pearson, Editor. Correspondence may be directed to the address below. Telephone number of the Laboratory is 312-231-6600.

National Accelerator Laboratory
P.O. Box 500
Batavia, Illinois 60501

U. S. Postage Paid
Non-Profit Org.
PERMIT No. 204
Batavia, Illinois