

September 2, 1982

FERMI NATIONAL ACCELERATOR LABORATORY

FermiNews

PAYROLL STAFF INTERPRETS NEW TAX LAW



The Payroll Department, located on Wilson Hall 4E, is staffed by supervisor Jo Baaske (front right), Connie Grubba (front left), Carol Alderson (middle right), Marshia Kaye (middle left), Debbie Szczepaniak (back right), and Debbie Andrle, summer student (back left).

by Carol Alderson

Though some out there in Fermiland might think their only function is distributing checks "on Thursdays after 3 p.m., please," Payroll's hard-working staff is preparing each employee's file for the correct processing of its check. Organization and a complete knowledge of procedure are required to do this.

As an example, the new tax withholding rate reduction law is one of the most current changes in procedure to be misunderstood. Though it was stated that there will be a 10% reduction in Federal Withholding, many employees have questioned why, after computing tax withholding, their rate does not equal the 10%. The reason given by the IRS states: "The withholding rates were reduced to closely match withholding with potential tax liabilities for **typical** married and single wage earners.

For some wage earners, particularly at the higher income levels, the match results in withholding reductions of less than 10% and compensates for the underwithholding normally encountered at these income levels. The withholding tax rates are rounded to the nearest whole percentage. Reductions in withholding could not equal exactly 10% without changing the withholding tax rates to fractions of a percentage."

If you should still have a problem computing or understanding your tax reduction, Payroll will be happy to assist you.

Payroll's job does not end when checks are finally printed. An array of reports must be computed and distributed after much checking and balancing. Since last January Payroll has been compiling information working toward 1982's W-2 totals.

USERS EXECUTIVE COMMITTEE ELECTS NEW CHAIRMAN



Users Executive Committee includes (left to right) Jim Walker, Ernie Malamud, Gaurang Yodh, Mike Shaevitz, Frank Taylor, Bill Carithers, Maris Abolins (seated), Dick Gustafson, Jeff Appel, Jerry Rosen, Lee Holloway, and Joe Lannutti. Not pictured is Stu Loken.

by Phyllis Hale

Maris A. Abolins, Michigan State University, was elected chairman of the Fermilab Users Executive Committee at its August 11 meeting. He succeeded Richard Gustafson, University of Michigan. Jeff Appel, Fermilab, will continue as secretary of the committee for the 1982-83 season.

The committee consists of 13 members, 12 of whom are elected by the over 1,000 members of the Fermilab Users Organization for two-year terms. Six members were recently elected, and six members are serving their second year. The outgoing chairman serves an additional year as the 13th member.

This year's newly elected UEC members are William Carithers, Lawrence Berkeley Laboratory; Lee Holloway, University of Illinois; Joseph Lannutti, Florida State University; Stewart Loken, Lawrence Berkeley Laboratory; Ernest Malamud, Fermilab; and Frank Taylor, Northern Illinois University.

Other members of the committee are Jerome Rosen, Northwestern University; Michael Shaevitz, Columbia University; James Walker, Fermilab; and Gaurang Yodh, University of Maryland.

Concerns of the UEC generally fall into three classes: the interaction of the users with the technical facilities of the Laboratory, the external affairs of the Laboratory, and the non-technical amenities of the Laboratory as they affect users.

SAVINGS BOND BENEFITS IMPROVED

Laboratory employees will soon be able to take advantage of an opportunity to increase their involvement in the payroll savings plan through which U. S. Savings Bonds are purchased.

Congress is currently acting on legislation that would tie bond interest rates to Treasury market rates, making Savings Bonds an even more attractive and competitive investment option. Today's Series EE Savings Bonds pay 9 per cent interest when held to their full eight-year maturity, 8-1/2 per cent interest when redeemed after five years, and 6 per cent interest after the first year.

Savings Bonds offer tax advantages, are protected against loss or theft, and help fight inflation. To take advantage of this opportunity, contact the Employee Benefits Office, WH 15E, ext. 4361.

CANADIAN PLAYERS PROJECT THE MYRIAD ART OF MIME

by Jane Green

Canada's finest silent players, the Paul Gaulin Mime Company, will bring their production, "Mirage," to Ramsey Auditorium on Saturday, September 11, at 8 p.m. Audiences delight in Paul Gaulin's interpretations of the human condition. His sketches incorporate masks, adventurous choreography, and spectacular theatricality to explore the foibles of man, his drives, and his passions. "Mirage" has been proclaimed a "stunning combination of theatre, dance, humor, pathos, and energy" that holds audiences spellbound.

Early in his career Paul Gaulin worked as an actor and modern dancer, but ultimately he selected the art of mime because it allows him to move as a dancer and play as an actor. He trained in Paris with the "dean of mime," Etienne Decroux, and Decroux's celebrated student, Marcel Marceau and developed his distinctive technique by synthesizing the finest attributes of these two masters. Gaulin performed as a solo pantomime in the Marceau tradition for three years, and in 1974 he formed a company of three. The troupe has performed throughout North America and Europe, and their popularity in their home base of Toronto has led to several extended engagements there.

Paul Gaulin's "Mirage" promises to enchant theater and mime enthusiasts of all ages. Admission is \$5, and tickets are now available at the Information Desk in the atrium of Wilson Hall. Call ext. 3353 for information and reservations. Phone reservations are held for five days but due to the great demand for tickets, those reservations not paid for within five working days will be released for sale.

NELSON FOCUSES ON TELESCOPE

"The University of California Ten Meter Telescope" will be presented by Dr. Jerry Nelson, Project Scientist on the Ten Meter Telescope Project at Lawrence Berkeley Laboratory at the Fermilab Colloquium at 3:30 p.m. in Ramsey Auditorium on Wednesday, September 15.

The University of California is planning to construct a 10 m diameter optical ground-based telescope. The design is innovative and employs an actively controlled segmented primary mirror. Details of the design and the philosophy, algorithms, and hardware for the primary mirror will be discussed.

The primary mirror is composed of 36 hexagonal segments. Local displacement sensors and displacement actuators allow the active control of the shape of the mirror. Current progress on an engineering prototype and on-site selection will also be discussed.

WELCOME BACK, CHRIS!



Chris Quigg, head of the Theoretical Physics Department, is welcomed back to a "spaced-out" office after a one-year leave from Fermilab. His wife Liz, son David, and daughter Katie accompanied him to Paris, France, where Chris was a Visiting Professor in the Laboratory of Theoretical Physics at Ecole Normale Supérieure.

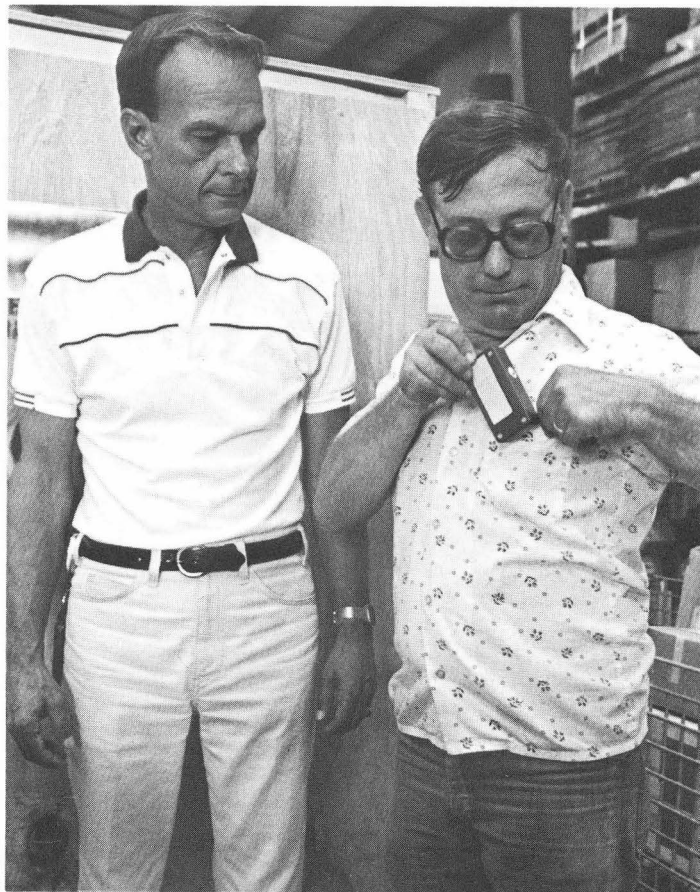
AREA BIKE PATH NETWORK EXTENDED AND IMPROVED

by John Pauk

If you enjoy bicycling, you should be pleased to see new bike paths going in from the Pine Street entrance to Wilson Hall and from Sauk Boulevard to the Batavia Street entrance. When completed, this will extend the bike path network and make it possible to bicycle completely through Fermilab on special paths.

A couple of other improvements are also in the works. One is a new path along Road A-1 connecting the reflecting pond and the master substation. Another is a rerouting of the path in the vicinity of the intersection at Eola and Batavia Roads. The latter change is intended to improve the safety at that intersection.

DEVICE WARNS OF IMPROPER LIFTING



Fred Assell, Shipping and Receiving, watches Ed Oliver adjust the detector.

by Bob Adams

A unique device has been incorporated in the Laboratory's Handling Training Program to lessen the problem of back injuries caused by improper lifting. The six-ounce electric box, the size of a cigarette pack, has a mercury-electric switch.

Employees wear the \$30 box in a shirt pocket during hands-on sessions designed to teach lifting safety. The battery-powered device emits a beep when it is tilted at an unsafe angle, alerting the wearer to straighten his or her body. The box is intended to demonstrate proper body angles and is not worn continuously.

According to Bud Stanley, who serves as alderman for the City of Batavia, contracts are being let by Kane County to install a bike path along the west side of Kirk Road. It will extend from Route 64 in St. Charles to Route 56 (Butterfield Road). That, coupled with the new paths at Fermilab, should provide several miles of safe and enjoyable cycling.

SPRAY BOOTH PROMOTES SAFETY

by A. L. Read

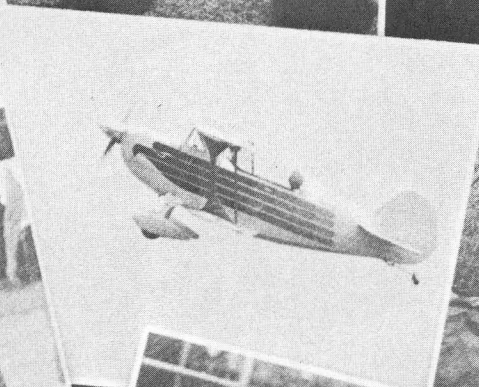
Several months ago, an Occupational Safety and Health Administration approved paint spray booth was installed in the northeast corner of the ground floor in Wilson Hall to help protect the health of the painter and to reduce the fire and explosion hazard.

Everyone is strongly encouraged to use the spray booth, no matter how small the job. To gain access into this locked area, users must contact Frank Pearsall, ext. 3996 or stop at his area, the Winding Room. The booth is available on request.

The user of the spray booth should adhere to the following rules:

- No smoking
- All painting must be done inside the booth
- Use of lead base paints is prohibited
- When using aerosol cans, be sure nozzle opening is pointed away from face
- Return all paints and solvents to proper storage areas
- User is responsible for leaving the booth clean for the next person.

Fermilab is operated by Universities Research Association, Inc. under contract with the U. S. Department of Energy. Fermilab is published by the Publications Office, P. O. Box 500, Batavia, IL 60510, phone (312) 840-3278.



Fermilab
National Accelerator Laboratory

