


# The Village Courier

 national accelerator laboratory

Operated by Universities Research Association Inc.  
Under Contract with the United States Atomic Energy Commission

Vol. 4 No. 3

January 20, 1972

## CONTROLS GROUP FIRST TO MOVE INTO CENTRAL LAB BUILDING

Right on the heels of the workmen completing Phase I of the Central Laboratory high-rise building, came the first NAL employees to move in to the ground floor in the industrial area--the Controls group of the Accelerator Section.

Deeply and closely involved in producing the control systems for all of the accelerators, and in the Main Ring in particular at the moment, the 19 technicians represent a consolidation of five groups previously associated with the Beam Transfer, Booster, Linac, Main Ring, and R.F. Sections. Under the direction of Bob Daniels, Controls Commissioner, the united group now has space to work, producing the components that will give interface between the accelerators and the computers -- the Sigma 2 in the main control room and the Mac 16's interspersed throughout the systems. When they have finished Main Ring modifications and maintenance, they will turn to controls for the neutrino and meson experimental lines.

Working in the midst of the array of electronic equipment that is the mark of their trade -- livened by the spools of colored wire, the soldering irons, and the many, many circuit boards -- the group, under the immediate supervision of Tony Tummillo, is getting the job done in spite of the heavy construction that goes on over their heads. Phase II of the building construction, now underway, will extend the building upward to the 16th floor and the top out. A tunnel, also completed, connects the high-rise to the Cross Gallery.

A "hats off!" to the Controls group who work under conditions somewhat less than ideal-- sometimes without power and heat; sometimes with water dripping on their desks--to add their important contribution to the completion of the Laboratory.

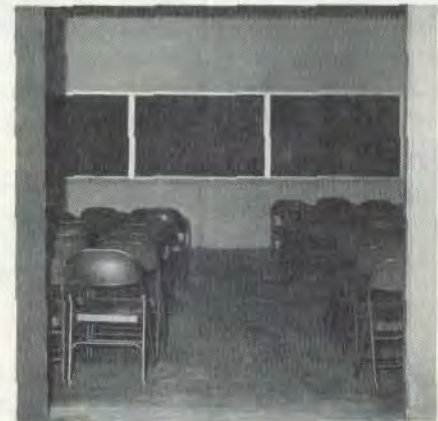


... (L to R) Larry Semsch, Ted Ulijasz, Bob Young, R. Mahler, and Karl Schmidt, members of the Controls Group of the Accelerator Section, now working on the ground floor of the Central Laboratory building...

Photos by Tim Fielding, NAL



...Phase II of high rise construction of the Central Laboratory will extend the building from its present level, above, to the 16 stories shown in the inset. Pedestrians may enter through the low enclosed wooden runway at right, which also leads to the lunch area...



...A small meeting room is now in use in the Central Lab Building -- for meetings of Operations groups, personnel seminars, etc...

COLLEGE TEACHERS TO STUDY NAL

The Physics Department of Northern Illinois University has been awarded a \$25,820 grant by the National Science Foundation to conduct a Short Course for College Teachers of Modern Physics entitled, "Frontiers in High Energy Physics," during the period June 5-16, 1972.

Professor Carl H. Albright will serve as program director assisted by Professor Alan J. Macfarlane, recently from the University of Cambridge. Nine physicists from the National Accelerator Laboratory and Argonne National Laboratory will present guest lectures. The course will include topics in the fundamentals, phenomenology, and experimental techniques of high energy physics with special emphasis placed on recent advances in the field. Three field trips to Argonne and NAL are included in the plans in which participants will have a chance to view experiments first hand.

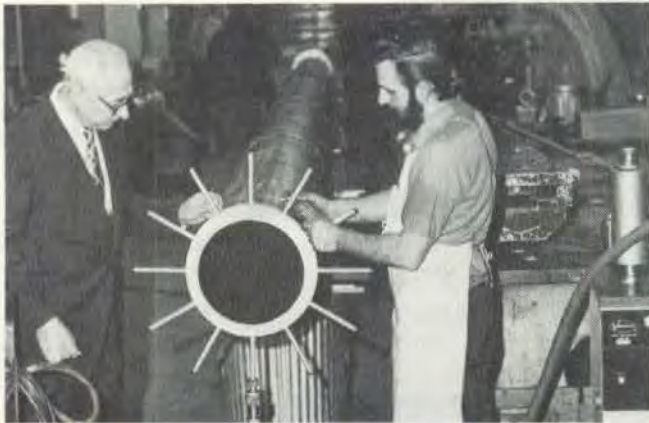
Selection of 30 participants in the program will be made in spring with special preference given to those teachers of modern physics at colleges and universities which do not have strong programs in high energy physics. There are no fees for the course; stipends up to \$500 plus some travel allowance can be arranged. Interested persons must write for an application form to Dr. Albright at Northern Illinois University.

Lectures on experimental techniques will be given at NIU by James K. Walker, of NAL, and Robert Diebold and Lloyd Hyman of Argonne. E. L. Goldwasser and Lee C. Teng, of NAL, Malcolm Derrick of Argonne, James Cronin, of the University of Chicago, (and several others yet to be named), will address the group during the field trips, to elaborate on plans at the two laboratories and to explain state of the art experiments.

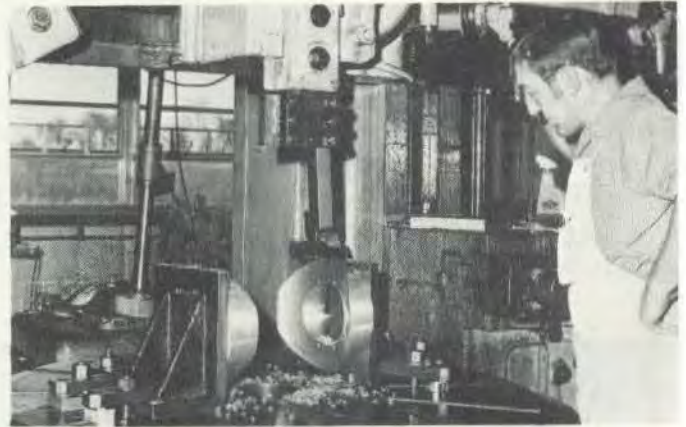
\*\*\*\*\*

OVER AT THE MACHINE SHOP....

Many of the installations in the NAL accelerator system must be tailored to suit the unique requirements of the work to be done here. The 54 men in the NAL Machine Shops are all expert craftsmen, turning out day after day the exclusive apparatus for the NAL machines. Shown here are a few of the machinists and some of the work they do....



*...Leo Koziola and Jim Schmidt inspecting a partially completed cerenkov counter made completely in the NAL Machine Shop...*



*...Jerry Peterson boring aluminum parts on the King Vertical Boring Mill -- Village Machine Shop...*



*(Left)...Walt Ewer setting up his engine lathe--in the Accelerator Machine Shop in the Cross Gallery...*

*(Right)...Jim Schmidt runs large Giddings and Lewis Boring Mill, machining a bar of steel to be used in a beam dump.*



Photos by Tim Fielding, NAL

## CAFETERIA LUNCH SERVICE OPENS IN HI-RISE

The Cafeteria staff went into action on two fronts this week--continuing renovation in the Village and now offering hot lunches in temporary accommodations in the Central Laboratory High Rise.

In the Village....a new lowered ceiling in the central portion of the building has improved the heating, acoustic and esthetic problems. A dishwasher to be installed shortly will allow china service to replace disposable ware. Serving hours in the Village Cafeteria are:

Breakfast - 7:45 - 8:30 a.m.

Lunch - 11:30 a.m. - 1:30 p.m.

Now featured at lunch time is Espresso coffee at 15¢ per cup....try it, you'll like it.

In the High Rise....lunch will be served from 11:30 a.m. to 1:30 p.m., Mondays through Fridays. Customers should enter the building through the east side door under the enclosed pedestrian portico. Tables and chairs have been installed for about 100 patrons at a time. Food will be prepared in the Village and brought to this dining area until permanent equipment is completed in the building.

Experience, demand, and patience, will determine food selection available in these temporary arrangements.

\*\*\*\*\*

## NAL MEN ELECTED TO CRYOGENIC POSTS

Two NAL men have been elected leaders of the Midwest chapter of the Cryogenic Society of America. They are: Mike Otavka, of NAL Research services, who will serve as Vice Chairman of the group, and Bruce Strauss, Accelerator Section, who was appointed Program Chairman. They will take office at the January 20th meeting of the group.

\*\*\*\*\*

CONGRATULATIONS: To the 55 employees in Industrial Buildings 1 and 2 who substituted \$45 in cash for Christmas card exchanges. Under the inspiration and guidance of LaDaune Koempel, the group's donation was given to the Heart Fund.

\*\*\*\*\*

## MARK YOUR CALENDAR!!!

Happy Hour....Wednesday, January 26....5:00-6:30 p.m....the Village Barn.

Gym Night.....Tuesday, February 1.....6:30-9:30 p.m.

West Chicago Junior High School, corner of Hazel and Joliet Streets in West Chicago. No charge.

## SEE YOU AT THE MOVIE--FRIDAY, JANUARY 21

Italian director Pietro Germi's film "Seduced and Abandoned," will be shown by the NAL International Film Society at 8 p.m., Friday, January 21, in the Village Barn. Germi also directed the highly-acclaimed "Divorce Italian Style," released in 1962, two years before "Seduced and Abandoned".

A Czeck film will accompany the main show...."The Hand," a short, available for this showing through the courtesy of the College of DuPage film library.

A coffee hour will follow. Tickets are \$1.00 each, sold at the door.

Delightful entertainment, good company. Everyone welcome!



...Let's put the oven over there," Sal Cuomo, Food Services Manager, tells Gerry Reid of Technical Services during Village Cafeteria renovation...

Photo by Tim Fielding, NAL

SATURDAY, FEBRUARY 12TH IS THEATRE NIGHT

Ask your favorite date now...for one of the most enjoyable social events of the winter months...the Theater Party at Candlelight Dinner Playhouse on Saturday, February 12th.

"Fiddler on the Roof," the current musical at Candlelight, continues to receive the praise of all who see it.

Tickets at \$11.00 per person include dinner, tips, the show (which is viewed from the dining area) and transportation to and from the NAL Village.

Get your tickets before February 1. Call Jim Snow, Ext. 775, or Barb Schluchter, Ext. 701.

CREDIT UNION ADOPTS NEW INFORMATION SYSTEM

Argonne Credit Union records, which include NAL, AEC and ANL employees, are being converted gradually to a new data processing program. By January 1, 1972, it is expected that all accounts will be converted. Most credit union forms, including statements, will take on a new look. Employees paid weekly, both at NAL and ANL, will have their deductions posted each week on Friday--the same date they are paid. Employees paid monthly will have their deductions posted the last day of each month, as now. AEC employees will have their share allotments posted bi-weekly on the day they are paid.

Starting January 1, all Argonne Credit Union numbers will have seven digits instead of five. For example, you easily can convert your old account number this way:

	<u>Previous Number</u>	<u>New Number</u>
NAL Employees	90321	1-00321-0
AEC Employees	81021	2-01021-0

\*\*\*\*\*

NAL PROTONS IN DOWNWARD SLIDE

The NAL PROTONS, resuming play after the Christmas holidays, have lost their last two contests to Richport Realtors and Doolins. The Protons were beaten in both contests by a total of six points. NAL now has a record of 3 wins and 5 losses.

The Protons' next contest on January 20, 1972 will be against Ready-Mix which has a record of 7 wins and 1 loss. The contest will again be held at Naperville High School in Naperville. You can be sure the Protons will by trying all of their best strategy. Come out and cheer them on!!

\*\*\*\*\*

NOTES FOR NAL EMPLOYEES...

W-2 Forms will be distributed to employees by Payroll Department on January 24, 1972.

Deadline for applications for U.R.A. Scholarships is March 1, 1972. S.A.T. scores must be in by April 1, 1972.

\*\*\*\*\*

CLASSIFIED ADS

FOR SALE - '67 Mustang. New mufflers, tailpipes, ball joints & recently installed new 302 CID engine. Power steering & disc.brakes. Auto trans., console, stereo tape. \$1,050 or offer. Russ Jones, 879-2900, Ext.235.

FOR SALE - '64 Chev. Conv. Red with black top. 4 speed trans. - 327. \$150 or best offer. D. Maxwell, Ext.266.

FOR SALE - 21" Airline Portable TV, excellent condition, just overhauled. \$65 or best offer. Jake, Ext. 275.

\*\*\*\*\*

National Accelerator Laboratory  
P.O. Box 500  
Batavia, Illinois 60510

U. S. Postage Paid  
Non-Profit Org.  
PERMIT No. 204  
Batavia, Illinois