

# The Village Voice



fermi national accelerator laboratory

Operated by Universities Research Association Inc.  
Under Contract with the Energy Research & Development Administration

Vol.9, No.18

May 5, 1977



## IN THE SHADOW OF MAN

"Man overshadows the chimpanzee fantastically. But the strange dichotomy of good and evil which we find, not only in man but also in the chimp, is particularly interesting."

Man/chimp comparisons were drawn Saturday for a capacity audience at the seventh and last program in the Fermilab Bicentennial Lecture Series. Speaking was Dr. Jane Goodall, observer of wild chimps at a research center in Tanzania, East Africa, for 16 years. "In the Shadow of Man" was her topic.

Her appearance was under the auspices of the L.S.B. Leakey Foundation. The foundation's late namesake launched Dr. Goodall's career as a researcher and during her career she has documented certain behaviors, thought to be unique in man, as also being practiced by chimps.

Her slide and film lecture revealed struggles for dominance with the chimp community; group hunting and food sharing; relationships between family members; significance of aging process; and the sequence from infancy through childhood and adolescence to maturity and old age.

Her observations, the speaker said, have strengthened her conviction that understanding chimp behavior may provide important insights about the evolution of man's social behavior.

The chimp is man's closest animal relative alive today, Dr. Goodall said. "We are primates, too," she noted, citing modern man's evolution up a long ladder from monkey-like forebearers. "Our studies show the chimp is closer to man than anybody would have given him credit for 10 years ago," she said.

While acknowledging man's superior intellectual, language and creative capabilities, Dr. Goodall pointed out that man's negative and destructive tendencies also overshadow those of chimps. World War II and horrors of concentration camps were mentioned as examples.

"We are trying to shed some new light on ways which we can look into human behavior. And if we can do that, then our research will be very worthwhile," Dr. Goodall said.

\* \* \* \* \*

## USERS MEETING MAY 13

FERMILAB USERS ORGANIZATION will hold its 11th annual meeting on Friday, May 13. The 824 member group will meet in the central laboratory auditorium from 8:30 a.m. through the evening.

Don D. Reeder, Chairman, said, "As in previous annual meetings, we will hear reports from the Laboratory Director and the President of the Universities Research Association. Again this year we will emphasize developments affecting the future plans of the Laboratory. There will be reports on progress toward the Energy Doubler/Saver, on the work of the newly formed Colliding Beams Department, and on the studies of "antiproton cooling." We intend to have question and answer periods following each report and to have an in-depth discussion of the future of fixed-target investigations in the light of the colliding beams opportunity."

Also, he said, there will be reports concerning computing at Fermilab and the short-term schedule for the experimental program. At 8:00 p.m. Dr. James S. Kane, Deputy Assistant Administrator for Physical Research, ERDA, will address the group in the auditorium. The purpose of the session is to provide an opportunity for users about the Laboratory to express views on topics of interest to the Users Organization and the Laboratory management.

\* \* \* \* \*

## INTERNATIONAL FILM FEATURE FOR MAY

"Adrift," a Czechoslovakian film, will be presented on Friday, May 13, at 9:30 p.m. in the auditorium. A movie by Jan Kadar, the film tells the story of a fisherman who rescues a mysterious young woman from drowning and takes her to stay with his family. Gradually, his life is torn apart by his growing desire for the young woman and the guilt that follows. The film is rated "R" and is in Czech with subtitles. Please note the change in time. Admission \$1.50. Not recommended for children.

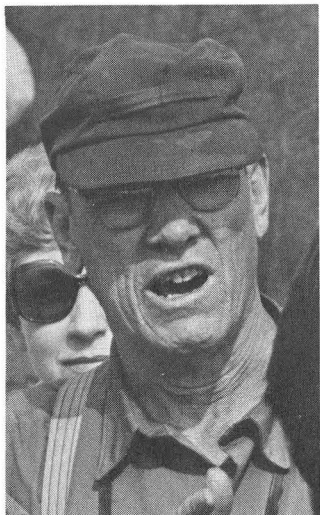
\* \* \* \* \*

## BIRD WATCHERS' REPORT

Thirty-eight species of Illinois birds were spotted at Fermilab April 17 in a two-hour field check by the Chicago Ornithological Society. Karl Bartel, outing chairman, headed 42 society members participating.

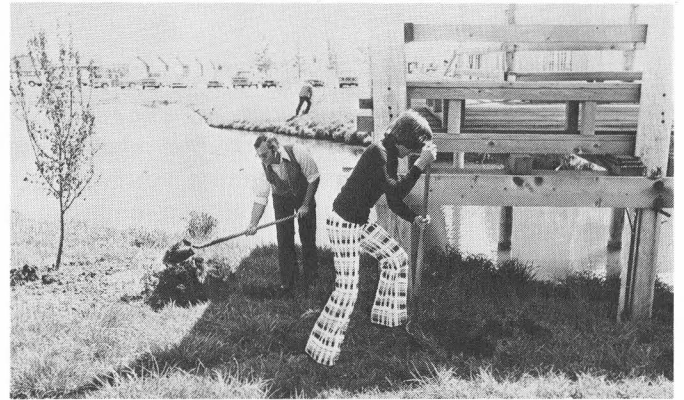
In December, 60 species were sighted on-site in a Christmas bird count conducted by the DuPage Audubon Society. The 77th annual event, sponsored by the National Audubon Society, was cosponsored by the U.S. Fish and Wildlife Service.

\* \* \* \* \*



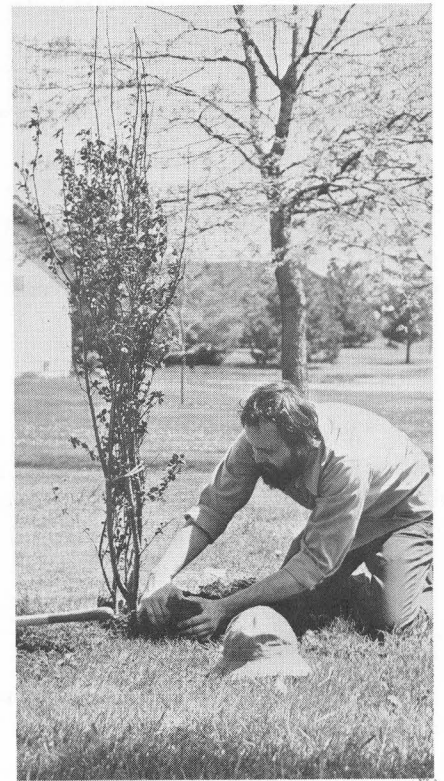
...Above, Karl Bartel (L) directs Fermilab bird walk that sighted 38 species. Center, Right: A couple scans Swan Lake and a fledgling bird-watcher strides into the search...





#### ARBOR DAY 1977

Tree-planting day, Arbor Day, was observed at Fermilab Friday. Employees/users added to the site's 250 acres of woodland by planting about 60 crabtrees and shrubs such as forsythia, burning bush and purple plum. The seventh annual observance was sponsored by Site Services. A native American custom, Arbor Day began in Nebraska in 1872 and has been observed in Illinois since 1887.



#### MEDICAL NOTE

Dr. Charles Lang, Fermilab physician, reminds employees that spring cold and flu season is here. He reports an increase in sore throats, upper respiratory infections and other ailments common to the changing seasons. For treatment advice, and to spare fellow employees from catching your "bug," contact the Medical Office on CL-1W, Ext. 3232. An advance appointment is suggested. This service is free.

\* \* \* \* \*

#### LTD INSURANCE PROTECTS EMPLOYEES

The Long Term Disability insurance plan provides income protection during an extended absence due to an illness or accident. The monthly income benefit from this coverage is designed to supplement other disability benefits, such as Social Security, guaranteeing 60 percent of your basic monthly earnings, up to a maximum of \$1500 per month.

During the years we have had Long Term Disability insurance, there have been increases in Social Security benefits. These result in an increased payment from Social Security for disability and a corresponding decrease in the Long Term Disability insurance payment to make up the total applicable maximum income benefit. Effective January 1, 1977, this insurance plan has been revised to place a limit on the amount of reduction in the insurance benefit resulting from Social Security benefits.

From January 1, 1977, Long Term Disability claims will be calculated on the basis of applicable allowances for Social Security benefits based on January 1, 1977 Social Security tables. Future increases in Social Security disability payments will not result in decreasing the group Long Term Disability insurance benefits.

For example, if an eligible employee earning \$1,000 per month is disabled, his or her disability income would be \$600 per month. The \$600 could result from a \$500 Social Security benefit and \$100 insurance payment. If, in 1978, Social Security increases its payment to \$550, the insurance payment remains at \$100 and the insured receives a total of \$650.

This change will only apply to Long Term Disability claims filed for employees disabled on or after January 1, 1977. Additional information concerning benefit features of the Long Term Disability program can be found on page 19 of your Employee Benefit Handbook.

\* \* \* \* \*

#### EMPLOYEE ARTS/CRAFTS ON PARADE

Fermilab employees/users with a flair for the creative will show their best efforts Monday through Friday. The 1977 NALREC arts and crafts show will be held in the Central Laboratory atrium. About a dozen Fermilab employee-artists will show photography; oil paintings; drawings; wire/wood sculptures; ceramics; plaster crafts; wall hangings; needlepoint; and gem stones/jewelry. Hours will be 9 a.m. to 5 p.m., May 9-13.

\* \* \* \* \*

#### HIGH ENERGY HOMECOMING

A different kind of homecoming. That was accelerator operator Sharon Winfrey's recent return to her high school alma mater. She went back to Ft. Osage High School, Independence, Mo., as a teacher-for-a-day. Returning to her former physics teacher's classroom, Sharon presented a slide program on Fermilab and answered questions.

\* \* \* \* \*

#### DIRECTORIES DISTRIBUTED

The latest Fermilab phone directory, updated to April, has been distributed to employees. Contact the mail room if you didn't receive yours.

\* \* \* \* \*