

FERMILAB NEWS

 Fermi National Accelerator Laboratory

Operated by Universities Research Association Inc.
Under Contract with the United States Department of Energy

Vol. 2, No. 11

March 15, 1979

WEISSKOPF ON HIGH ENERGY PHYSICS

"Thus I have described the developments in physics in my lifetime. It was tremendous, and I must say it has filled my life and the lives of my contemporaries with an enormous amount of excitement, interest and greatness. In spite of the fact that the same period also witnessed the worst things in human character, they also witnessed the best things in human character, and this (the remarkable developments in high energy physics) is the example."

With those words, Dr. Victor F. Weisskopf ended his physics colloquium at Fermilab on "52 years of quantum electrodynamics." The grand statesman of high energy physics had come here to share his wisdom and to stir the minds of those in his audience. He talked about advanced theories, their mathematical nuances and their durability to withstand the scrutiny of time.

Weisskopf is one of those grandmasters whose moves on the chessboard of high energy physics have earned him the right to share the pedestal with the greatest minds in that field. The first director general of CERN and now professor emeritus of physics at the Massachusetts Institute of Technology, he is gentle of manner and honest enough to have given one reason--perhaps tongue-in-cheek--why he had ended up in high energy physics.

"After many years of work in nuclear structure, the field became a little too complicated for me. I don't like complicated things, and therefore, I thought that high energy physics would be the right thing to go into," he wrote in his book "Physics in the Twentieth Century: Selected Essays."

During an interview before his colloquium, Weisskopf talked about the potential influence on science of the emerging Chinese interest in high energy physics.



...V. L. Weisskopf...

He praised the Chinese for being "an extremely gifted people," but felt that it would be one to two decades before they could begin to compete with the Americans and Europeans in high energy physics. Weisskopf, who has visited China twice and who has "a close connection with their program," said it is hard to tell just how fast the Chinese will progress in this field.

He did believe, however, that in the coming years as high energy physics advances in the People's Republic of China, American and European scientists will be eager to visit the physics research centers in that country. "The Chinese people have one of the oldest cultures in the world and therefore have an enormous reserve of intellectual capacity..." he said in the interview.

When asked about the contributions of Enrico Fermi--whom Weisskopf knew personally---he replied, "Enormous. He was a great man in physics." Weisskopf ranked him with the greatest minds ever in 20th century high energy physics, those physicists who stand "head and shoulder above the rest of us."

It was "the newness and the impact of what they did" that earned them immortality," Weisskopf said.

* * * * *

THEY'RE HERE AT LAST

The eagerly awaited new telephone directories are here.

More than 2,500 copies were distributed February 28 and March 1, said Carolyn Hines, manager of Communication Services and supervisor for the publication of the new directory. An additional mailing will be made to other laboratories working in high energy physics and to universities.

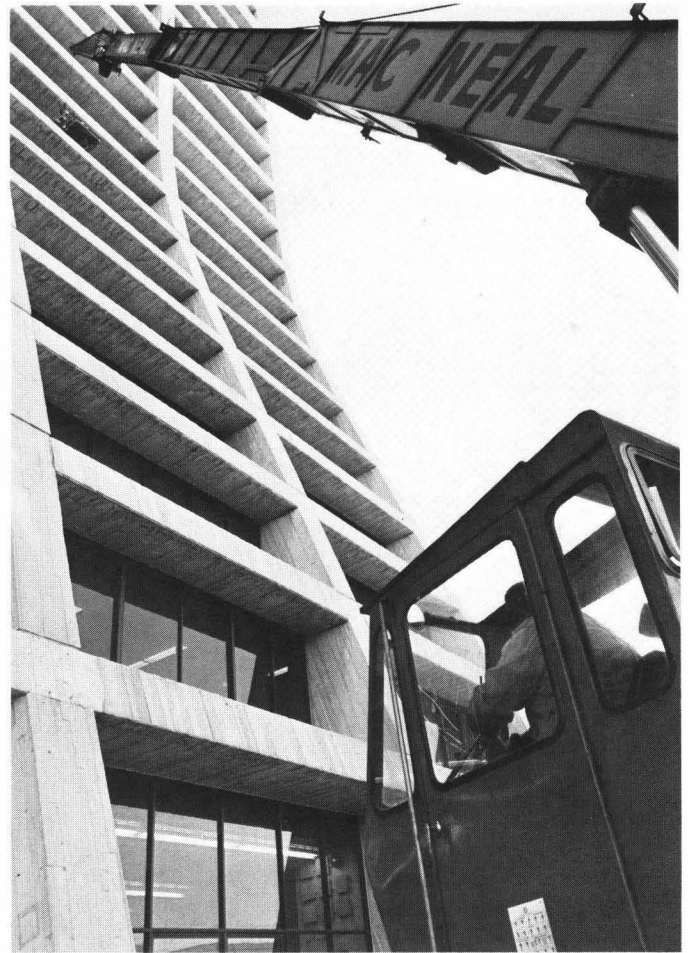
Persons who need additional copies should contact the Mail Room. To make corrections, call Eileen L. McWayne, Communications Center supervisor.

Hines praised her staff for its work in producing the directory as well as Sybil F. Krebs, Supervisor of Duplication Services, who printed the directories.

* * * * *



...A Polish menu was served at the first of a series of international lunches sponsored by NALWO. Preparing their native dishes were (L-R) Elzbieta Bialas, Bogna Louri and Zofia Doroba, wives of the three visiting experimenters from Poland who reside in the Fermilab Village. The menu consisted of vegetable salad, pate, white and rye bread, borscht and poppy seed cake...



...Computer components are gently removed from the seventh floor of the Central Laboratory to make way for more modern units and for a reorganization of the computer sections on the seventh and eighth floors...

REMEMBER.....NALREC'S

Friday,
March 16
5-9 pm

Shamrock Shenanigans!

Music by
Bob Hardy
of
WGSB

Free Admission...Refreshments...Cash Bar

FERMILAB EMPLOYEES TO HAVE DENTAL COVERAGE

Fermilab has added another major coverage to its already attractive package of benefits--dental insurance.

The dental coverage plan, underwritten by Connecticut General Life Insurance Co., Hartford, becomes effective April 1 and costs the employee nothing.

However, the benefits office strongly emphasizes that each employee must fill out a registration card and return it to the office. Although an employee is automatically covered by the new dental plan, he or she cannot collect on claims unless the card is on file with the insurance company.

An employee's family also can be covered by the plan, but the employee pays one half of the monthly premium and Fermilab pays the other half. No dental examination is required if the employee registers his or her family within the initial 30-day sign-up period. However, after that time, evidence of insurability will be required.

An employee and his or her family is covered in four classes of dental health care. They are:

CLASS I--Diagnosis and preventative care, which includes periodic oral examinations and dental hygiene care.

CLASS II--Basic restorative care, endodontics, periodontics, maintenance of prosthodontics and oral surgery. Examples are general anesthesia, fillings, root canal therapy, gum treatment, simple extractions, surgical extractions and bridge replacement.

CLASS III--Major restorative and installation of prosthodontics, which includes gold inlay fillings, and complete and partial dentures and crowns.

CLASS IV--Orthodontics.

More details are explained in the booklet "Your Group Dental Insurance Plan" that was sent to employees. It gives a sample schedule of dental services and the maximum covered dental expenses as well as procedures on how to file a claim and coordinate the plan with other dental coverage a family might have.

For additional information about this new dental plan, contact the Benefits Office in Personnel Services, CL-6E, Ext. 3395.

Dental insurance is the fastest growing form of health protection in the United States, according to a report by the Health Insurance Institute. Since 1970 the number of Americans with some form of dental insurance has gone up from 13 million to 44 million, an increase of 238 percent.

* * * * *

NEW ART EXHIBIT OPENS AT FERMILAB

Forty prints by Barbara A. Brien, educator and prize-winning Naperville artist, are now on exhibit in the gallery, CL-2S.

The prints, some black and white and some in color, will remain on exhibit at least through March, and possibly into early April.

Ms. Brien has been experimenting with printmaking media and techniques since 1962. She has adapted many techniques she learned about painting to the silk screen, and in 1964 earned her first award for serigraphy. She has exhibited relief, intaglio, lithography, collograph and serigraph prints. She has taught art and has received more than 125 awards from 1964 through 1978 in invitational and juried shows in Illinois and Wisconsin.

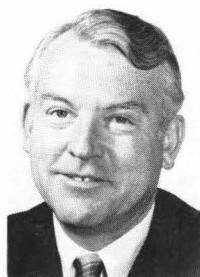
* * * * *



...Print in Barbara A. Brien exhibit...

The Gupta sculptural tradition of India and its influences will be the subject of a lecture March 30.

Free and open to the public, the lecture will be given by Dr. Jack V. Sewell, curator of oriental art at the Art Institute of Chicago. It will begin at 8:30 p.m. in Fermilab Auditorium.



The Art Institute will exhibit 74 sculptures in stone and bronze from this period in its Morton Wing, from March 24 through May 6. The Gupta Period in India covers the early 4th to early 7th centuries, and is generally known by scholars as the Golden Age.

Reservations may be made by contacting the Guest Office, CL-1W, Ext. 3124.

* * * * *

CREDIT UNION 29TH ANNUAL MEETING MARCH 21

The Argonne Credit Union will hold its 29th annual meeting March 21.

The session will begin at 6:30 p.m. in the cafeteria of Building 213, Argonne National Laboratory, 9700 S. Cass Ave., Argonne. The purposes of this meeting are:

--To present reports on the operation of the credit union to members,

--To elect 15 members to serve on the Board of Directors, and

--To conduct other business that may be called to the attention of those participating in the meeting.

Ken Bourkland and Larry J. Sobocki, both of Fermilab, are among the slate of candidates that the 1978 board endorses for election.

Each director will be elected to a one-year term. For each \$25 share owned by a credit union member, he or she is entitled to one vote. Members may vote for a director by proxy, however.

* * * * *

The concept of how shopping centers have influenced modern society will be examined by Neil Harris, Friday, March 16.

His talk, "From the Emporium to the Shopping Mall--The Architecture of Shopping"--will begin at 8:30 p.m. in Fermilab Auditorium. Harris is a historian at the University of Chicago.

Tickets may be obtained from the Guest Office, CL-1W, Ext. 3124.

* * * * *

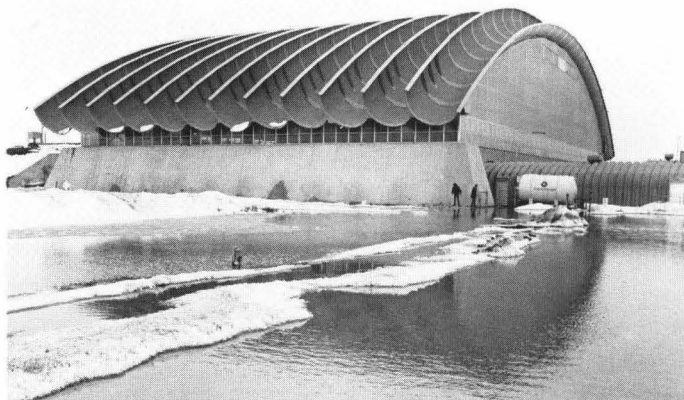
FERMILAB PLANS TORNADO DRILL

Fermilab will conduct an unannounced tornado drill in the Central Laboratory the week of March 19, John A. McCook, associate director for administration, announced.

A whooping siren in the atrium and tornado warning alarms on the upper floors will alert occupants of the Central Laboratory that they are to move to the safety shelters as quickly as possible and without panic, said Rudolph F. Dorner, emergency coordinator with Emergency Services. Persons who have questions about the proper procedure should contact the floor warden or call Dorner on Ext. 3494.

The procedure calls for occupants to move to the south stairwells and proceed to the shelters in the lower levels of the building, said Dorner.

* * * * *



...It's a March 4 Sunday morning. Spring is on the way, and along with it comes rain, thaw, runoff and flooding. The view looks at the Meson Area from the northeast...