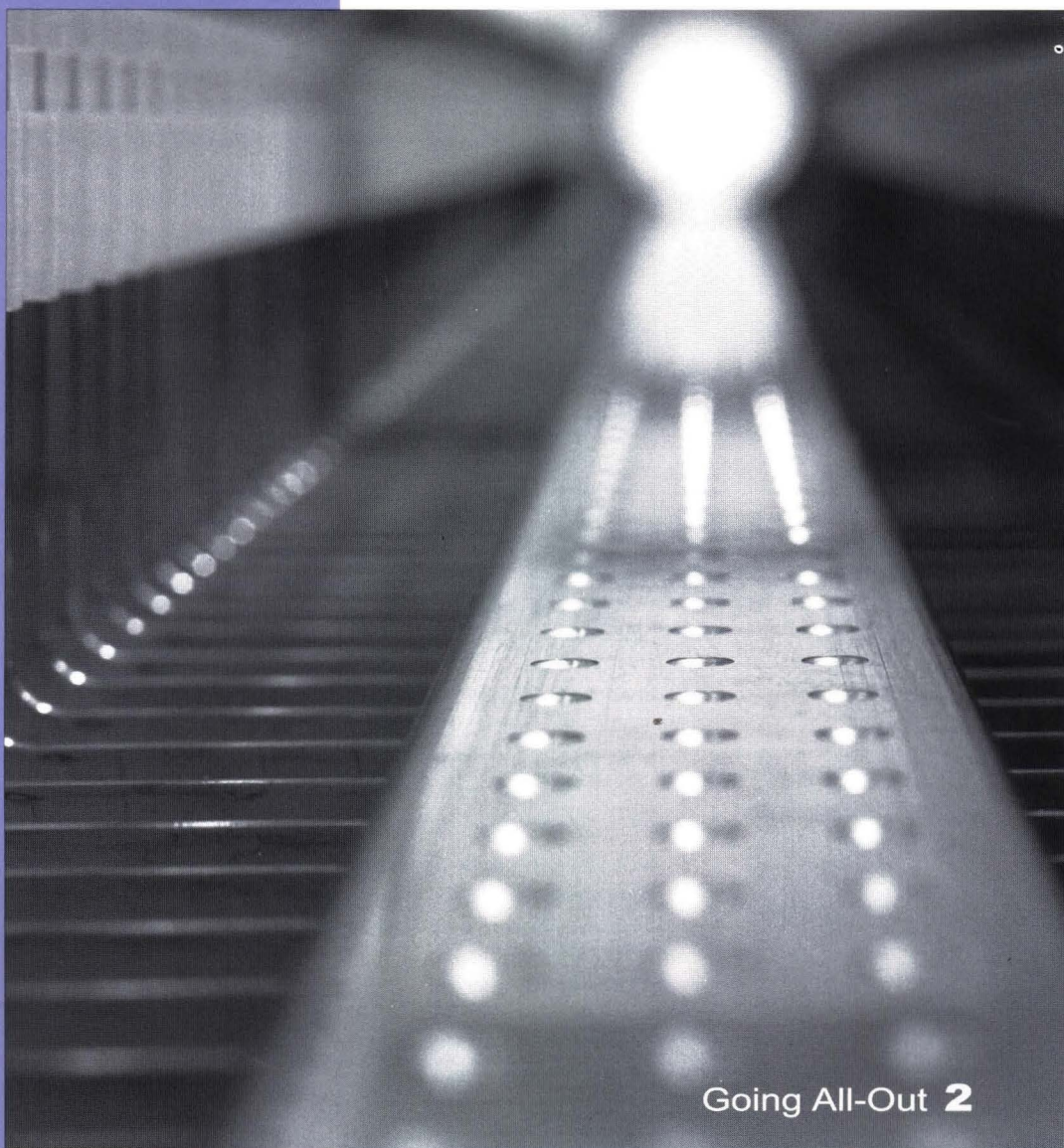


# F E R M I N E W S

F E R M I L A B

A U.S. DEPARTMENT OF ENERGY LABORATORY



Going All-Out **2**

Photo by Reidar Hahn

Volume 22

Friday, January 22, 1999

Number 2



## INSIDE:

- 4 Tevatron
- 7 Bob Wunderlich
- 8 Snow News
- 10 How to Make a Proton Beam
- 13 The Talk of the Lab



# Going All-Out

MAIN INJECTOR  
PREPARES TO ACHIEVE  
SEVENTH AND FINAL  
COMMISSIONING GOAL.

by Mike Perricone

**T**he Main Injector had been running beam for just over 20 days when commissioning crews rang up the sixth of their seven formal commissioning goals on Wednesday night, January 6, 1999.

That's just under three full weeks with a proton beam running through the new \$230 million accelerator. Three weeks scheduled around simultaneous commissioning activities and installations. Three weeks apportioned over winter evenings and weekends, from the first injection of a hair-thin stream of protons to a point where the final commissioning goal is within reach.

"With 20 days of beam, I think we're doing a reasonably good job," said commissioning chief Shekhar Mishra of the Beams Division's Main Injector Department.

Like a team in the final round of the playoffs, the Main Injector commissioning crews know that a successful sixth goal is like a successful sixth game: it sets up the decisive final confrontation.

To reach their sixth goal, the crews had to show that the machine could "bulk up" on protons enough to fill the next stage of Fermilab's accelerator complex: the four-mile ring of the Tevatron, the adjacent site of the proton-antiproton collisions in Fermilab's next collider run beginning just after the turn of the century.

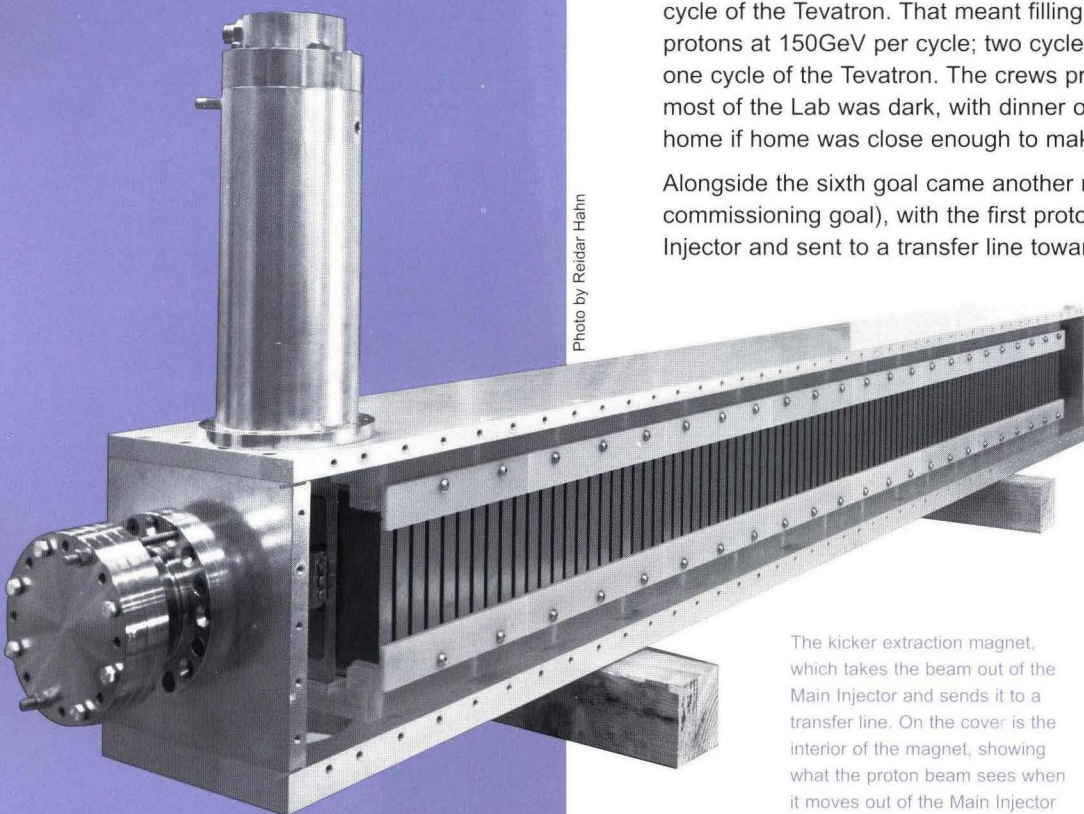
The criteria for the sixth commissioning goal: a total of  $2 \times 10^{13}$  protons to fill a cycle of the Tevatron. That meant filling the two-mile Main Injector with  $1 \times 10^{13}$  protons at 150 GeV per cycle; two cycles of the Main Injector would thus fill one cycle of the Tevatron. The crews prepared for another long workday, after most of the Lab was dark, with dinner over a desktop or during a quick dash home if home was close enough to make the round trip reasonable.

Alongside the sixth goal came another milestone (though not itself a formal commissioning goal), with the first proton beam extracted from the Main Injector and sent to a transfer line toward the Tevatron. The 8.9 GeV beam

didn't reach the Tevatron but it did get as far as the FZero "switching junction" between the accelerators; not yet cooled to its superconducting state, the Tevatron is not prepared to accept beam.

But building an accelerator leaves no margin to rest on success. No sooner was the sixth goal reached than the seventh and final goal became an all-consuming focus and a major challenge, with documentation for the machine's full commissioning due with the Department of Energy by early spring.

Photo by Reidar Hahn



The kicker extraction magnet, which takes the beam out of the Main Injector and sends it to a transfer line. On the cover is the interior of the magnet, showing what the proton beam sees when it moves out of the Main Injector on its way to the Tevatron.



The seventh goal stands as the all-out seventh game of the playoffs for the Main Injector. The goal represents a final stretch of the accelerator's capabilities: a high intensity beam of  $2 \times 10^{13}$  protons extracted in what's called a "slow spill," maintaining a uniform intensity for up to a full second while the near-light-speed beam is being removed from the Main Injector.

Normal extraction times are measured in millionths of a second, and protons will make nearly 100,000 turns around the two-mile accelerator in the course of a full second. The slow extraction is designed to satisfy future experiments, including the Neutrinos at the Main Injector (NuMI) project and proposed experiments such as Kaons at the Main Injector (KaMI). No current experiment requires a high-intensity slow-spill extraction.

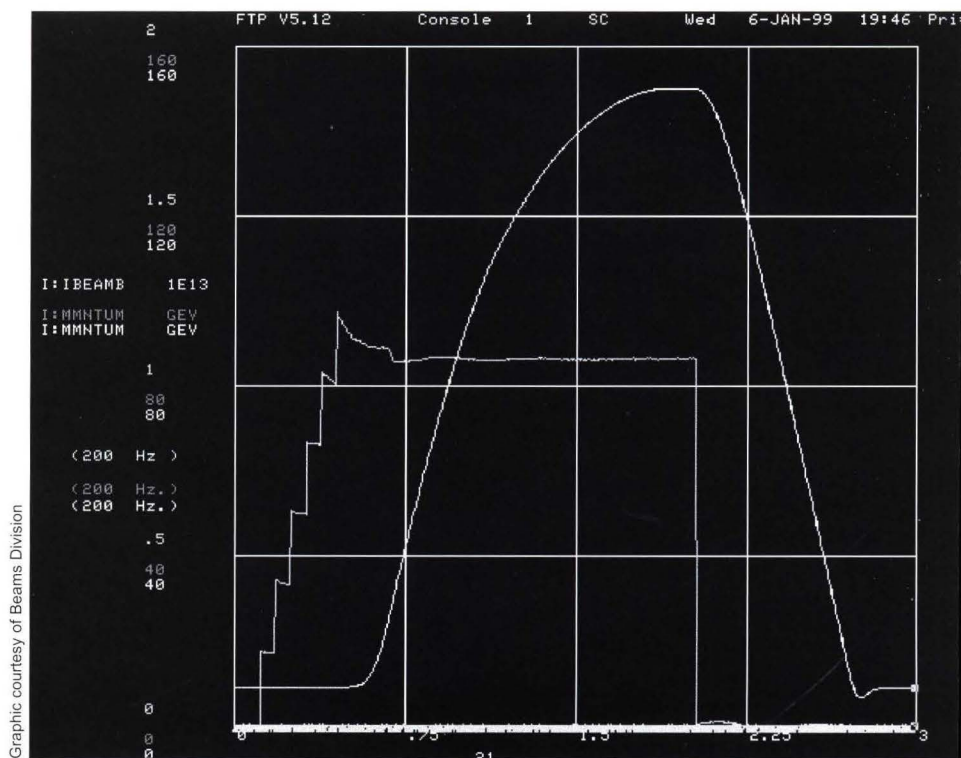
But a goal is a goal, and this goal is specifically mandated by the commissioning standards for the accelerator set in agreement with the Department of Energy. The slow spill operation requires a system of "dampers" to stabilize the high-intensity beam over the comparatively huge length of time for the beam's extraction.

"It is a pretty big deal," Mishra said. "When you have so much beam, it tends to become unstable. Some of the slow spill hardware has already been installed, but there is more that needs to go in. We think it can be done in about ten days, although it will be a very intense ten days."

The Main Injector schedule now calls for a 10-day shutdown from January 14 through January 23, to complete installation of the slow spill system and to advance the installation of the Recycler, which shares the Main Injector tunnel. Beams Division head Steve Holmes hopes to have some extra manpower for that job, with other divisions pitching in to help meet the deadline.

"We had five technicians from the Particle Physics Division and a few from the Technical Division working with us most of the fall, and they made a great impact," Holmes said. "We'd like to get that kind of help again."

After the shutdown, Holmes hopes to reach the slow spill commissioning goal by February 15.



Goal No. 6: The hill-like curve starts from 0 and reaches 150 at between 1.5 and 2.25 seconds—meaning the Main Injector has achieved an energy of 150 GeV (billion electron volts). Meanwhile, the jagged line peaks and settles to a plateau just above a value of  $1 \times 10^{13}$ —meaning the Main Injector has achieved Goal No. 6.

Then the machine would be shut down again for six to eight weeks to complete installation of the Recycler. By mid-April, commissioning should resume again, this time for the Recycler, the Antiproton Source and the Tevatron; then beam would be sent to the Tevatron to be used in fixed-target experiments.

Most recently, the Main Injector schedule has survived the failure of one of the 12 transformers powering the dipole magnets, possibly a casualty of the heavy snowfall buffeting the Lab throughout January. That transformer will be replaced during the February shutdown; meanwhile, the remaining 11 transformers are carrying the load.

They could also be carrying a message: It's time to go all-out. The seventh goal is the seventh game. 🍀



# PIECING THE TEVATRON TOGETHER AGAIN

by Sharon Butler

**W**ith the intense activity surrounding the commissioning of the Main Injector, the Tevatron has all but been forgotten. By some.

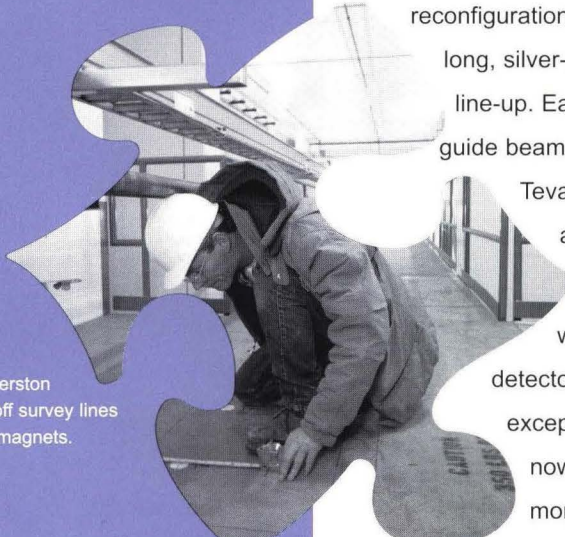
Others have been quietly hard at work. Like the mechanical support crews, who have been emptying sections of the tunnel, pulling out magnets for repairs, and reinstalling old magnets or inserting brand new ones, piecing the Tevatron together again.

Since the start of the shutdown 18 months ago, the crews have been working 10-hour shifts on weekdays and 8-hour shifts on Saturdays. A second evening shift was added in July. Crew member Jim Holub remembers, because that was the start of the bowling season he had to miss.

For contractor crews reinstalling the cryogenic pipelines in areas disrupted by construction, the recent subzero temperatures haven't helped. Fermilab engineer Alex Martinez said they've had to build huts to block the wind while they're welding, and have sometimes had to dig pipes out from underneath two feet of snow.

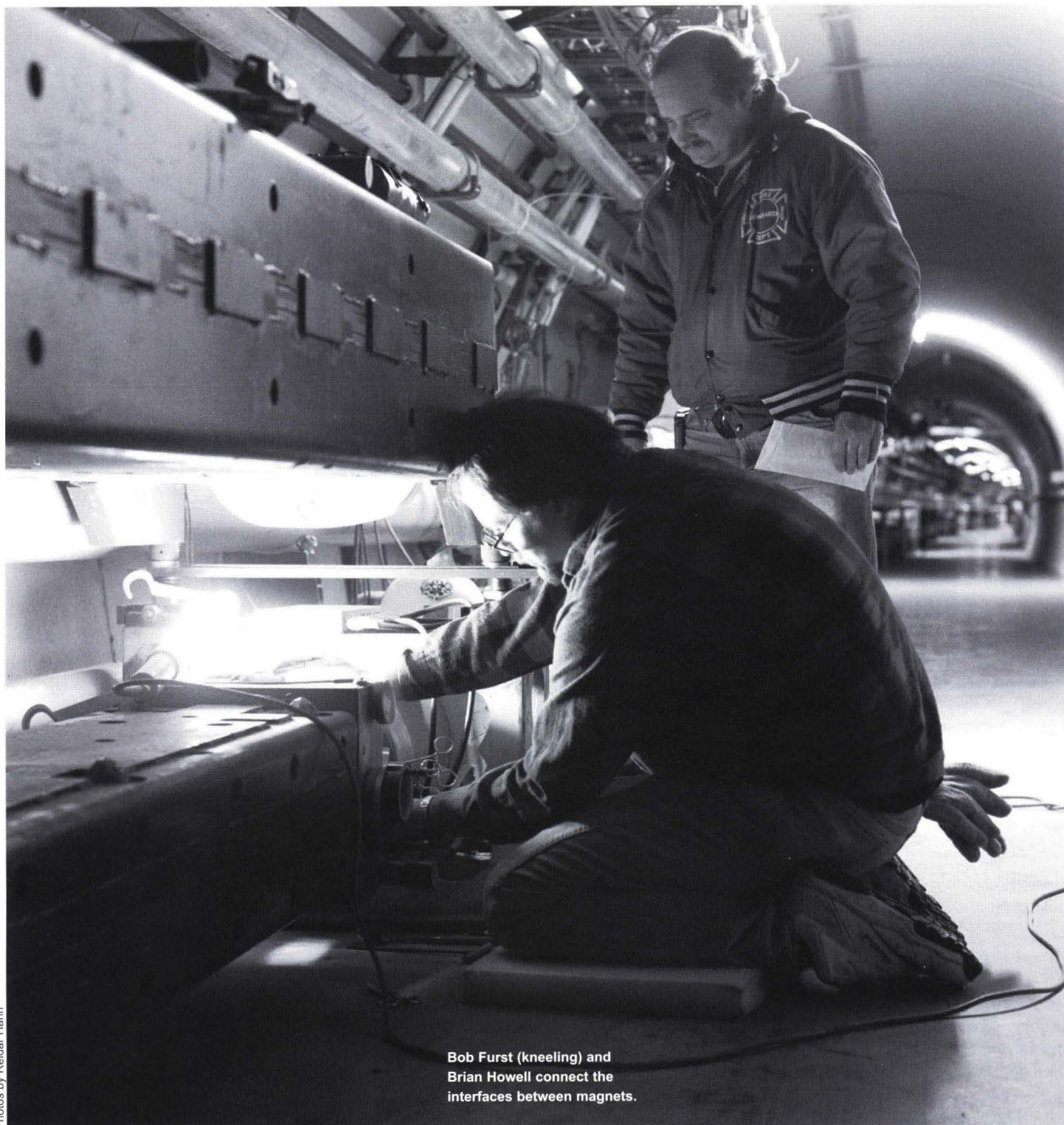
If all goes according to schedule, the Tevatron will be chilled to superconducting temperatures again on March 1, and its superconducting magnets will be ready to accept beam from the Main Injector and ramp protons up to higher and higher energies. But in important ways, this reincarnation of the Tevatron looks different. At the location designated FZero, for example, magnets and utilities (like cables and pipes) were removed to allow for a reconfiguration of the tunnel, and then reinstalled. Spanking new 10-foot-long, silver-painted Lambertson magnets have been added to the magnet line-up. Each weighing as much as two elephants, the Lambertsons will guide beam from the Main Injector into the circulating beam in the Tevatron; when they are turned off, beam is shunted out to the antiproton source or to fixed-target areas.

Major construction work also took place at location CZero, where an experimental hall was built to accommodate a future detector. The profile of that section of the Tevatron remains the same, except that, where the experimental hall is deep, special stands now raise the magnets seven feet off the ground (instead of the more typical few inches).



John Featherston  
measures off survey lines  
to position magnets.





Bob Furst (kneeling) and  
Brian Howell connect the  
interfaces between magnets.





Approximately 29 superconducting dipoles, at locations scattered around the ring, have also been repaired by the Technical Division. The original leads had been tied with nylon tie-wraps which, damaged by radiation over time, became brittle and fell off. With the repairs, the leads will remain stable, preventing magnet failures.

When the Tevatron cranks up again this spring, it will be delivering beam to fixed-target experiments. And Beams Division staff are hoping to use that run to test and develop novel items introduced in the accelerator to improve operations in next year's collider run.

One item, at location EZero, is a "dog leg"—an angular bend in the line-up of four old Main Ring magnets—with new collimators, or steel jaws, to scrape off protons. The aim is to more efficiently recycle antiprotons. "At the end of a store, there are both protons and antiprotons in the machine," said Mike Church. "It will be easier to recycle the antiprotons if you first scrape away the protons. Then you can center the beam of antiprotons, decelerate it, and get it back into the Recycler."

The new collimators will also be used to "scrape" the beam halo, or stray protons that can get into the detectors and create annoying excessive background for experimenters. Placed at strategic points around the ring, the collimators can be moved, by remote control, close to the beam so that the beam halo hits these devices rather than the detectors.

Other hardware under development for Run II includes a new damper system, also at the EZero location, which will make the Tevatron beam stable at high intensities.

Once the magnets are all installed and connected, their vacuum systems are checked for leaks: an exhaustive and heroic task. But before the big chill—the cooldown—can begin, all moisture has to be purged from the cryogenic pipes, the refrigeration system and the magnets. In certain segments of the ring, that process began three weeks ago. Dry nitrogen gas is repeatedly flushed through the system, driving out any moisture that might freeze when the cooldown begins, clogging valves and other equipment.

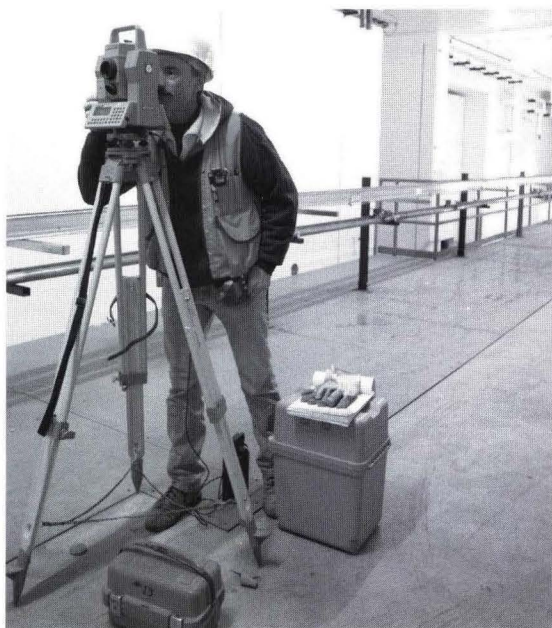
The cooldown itself is scheduled to begin February 1, according to Barry Norris, group leader for cryogenic systems. It involves several stages. The first is a leak check, or what Norris likes to call, more descriptively, a leak hunt. Norris explained that helium leaking from the cryogenic system into the tunnel through broken or improperly connected parts can be costly, because helium is so expensive. The nitrogen is then pumped out and the system then backfilled with helium. Next, the helium is passed through filters as it circulates through the entire system. Any nitrogen in the system, like any drops of moisture, can clog parts, since nitrogen freezes before helium. The aim of the purification process is to reduce the amount of nitrogen to less than 5 parts per million.

Finally, the real cooldown can begin, dropping temperatures in the superconducting magnets to 4.5 degrees Kelvin.

Barring unforeseen circumstances, Church said the Tevatron would be cold by March 1—ready in plenty of time to take beam from the Main Injector. 🌀



Jim Holub tests for leaks in the vacuum system.



Gary Coppola surveys in the Tevatron tunnel.

Photos by Reidar Hahn



# Wunderlich

★

## Will Manage

★

## the Mission

★

## for DOE's

★

## Fermi Group

by Mike Perricone

**B**ob Wunderlich, the new Acting Manager for the Department of Energy's Fermi Group, sees himself as a man on a mission.

"It's a joint mission with the Laboratory," said Wunderlich, who moved over from his position as Assistant Manager for the Argonne Group, at Argonne National

Laboratory, following the retirement of Andy Mravca on January 2.

"My job is to make sure the programs at Fermilab get started, keep moving efficiently, and are successful," he continued. "We've decided on what we're going to do, now how do we get there? My focus will be on that sense of mission."

Wunderlich's sense of mission stems from his three years in the Marine Corps. He joined right after high school, spending a year in Vietnam.

"I was a rifleman in an infantry company, the Third Battalion, Fifth Marines, arriving right at the end of the Tet offensive," he recalled. "I spent my first three months up in the bush. The fortunate part is they moved their location to an area accessible by road and got a company jeep. They made me the jeep driver. So there was no more being on point, or carrying the radio. I didn't go into the bush any more, which is probably why I'm here today."

After the Marines, Wunderlich got his bachelor's degree in mechanical engineering from Penn State in 1973 on the GI Bill. He added a master's in nuclear engineering through an Atomic Energy Commission training program, then interned for a year in reactor safety analysis at Argonne in 1976, where Mravca tried to hire him. But Wunderlich headed back to Washington for more training. He returned to Argonne in 1989, after five years as a reactor engineer at DOE headquarters and 10 years in the Civilian Radioactive Waste Disposal Program.

Wunderlich served seven years as project manager for Argonne's \$800 million Advanced Photon Source accelerator—"and it was completed on cost and on schedule," he emphasized, building a cooperative relationship with Argonne management that he cited as a high point of the project. His assistant for three years was DOE Main Injector project manager Ron Lutha, once again a colleague in the Fermi Group.

"This is going to be a good place to work," Wunderlich said. "Fermilab has always had the reputation of doing premier science, and of doing a lot with a little."

Wunderlich, married for 29 years, lives in Woodridge. His wife, Cynthia, is a computer programmer with Electronic Data Systems in Chicago. They have three sons and three grandchildren: a boy, three years old, and two girls, a year old and a month old.

"They're a lot of fun," Wunderlich beamed. "They're my hobby now." ☺

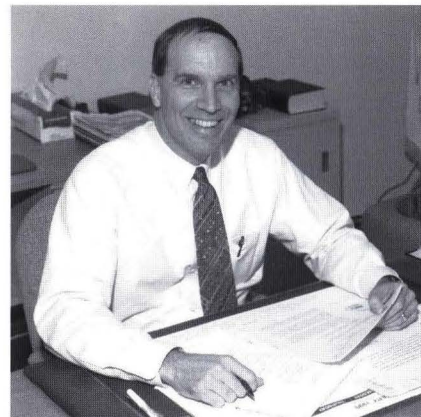


Photo by Jenny Mullins



# SNOW

## News Was Good News

...WITH FERMILAB CREWS  
PLOWING OUT FROM UNDER  
A RECORD WINTER STORM

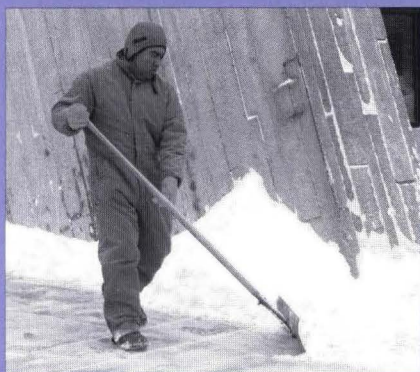


Photo by Jenny Mullins



Photos by Reidar Hahn

Crews removed the snow from  
380 acres of parking lots.

by Judy Jackson

**W**ith the New Year came the snow: first a few flakes, then a few more, then The Blizzard of '99. It started snowing on New Year's Day; by the time it stopped two days later, the Chicago area was buried under the second-largest snowfall ever recorded. Midwest airports closed, streets disappeared, the north wind howled and temperatures plunged to bone-chilling levels. At Fermilab, it was beginning to look a lot like winter.

Almost as soon as the storm began, Fermilab crews went to work to keep the Laboratory's roads clear. Summoned to an early return from the 12-day holiday break, they worked around the clock, with only three-to-four hour breaks to catch up on sleep. The 18-man team operated plows, front-end loaders, snowblowers and shovels to clear the 25 miles of roads, 380 acres of parking lots and countless walks and driveways on Fermilab's 10-square-mile site.

As a result, while the rest of Chicagoland slipped, skidded and slid to work on the first workday of 1999, the Fermilab staff arrived at the Laboratory on Monday to find clear roads, plowed lots, and towering banks of piled snow.

"We moved many more cubic yards of snow than ever before at Fermilab," said Mike Becker, of the Laboratory's Roads and Grounds Department, who with colleague Bob Lootens managed the snow job. "In 1979, there was more snowfall, but Fermilab had far fewer paved areas, so there was much less snow to move."

The crew manned seven pick-up mounted plows, six large dump-truck plows, front-end loaders, snowblowers and shovels, with crew members taking shifts on all the different equipment, from shovels to loaders, so that no one got stuck doing the same job for hours on end.

Becker had praise for both his crew and their tools.

"Most of our snow equipment is relatively new and well maintained," he said. "We have a mechanic on duty throughout the snow operations. When he's not needed to fix something, he jumps on a plow to help out. We have reliable people and reliable equipment. You need both to deal with a snowstorm."

One crucial piece of equipment never left the snow crew's central shop.

"We keep a coffee pot going at the shop," Becker said. "We keep it hot around the clock. And we designate a couple of people at each meal as cooks. This morning, Bob Lootens and Martin Valenzuela made pancakes and eggs for us for breakfast."

Later in the week, as more snow fell, crews continued digging out from the first storm. Crew member Joe Trevino maneuvered a front-end loader, piling snow from a parking lot at a service building for Fermilab's new Main Injector accelerator. Trevino had arrived at Fermilab along with the first snowflakes and had worked steadily ever since, pausing now and then to catch some sleep. He described conditions during the worst of the storm, when winds gusted to 45 miles per hour.



"The wind is the worst," Trevino said. "You just get an area cleared, and the wind blows the snow back. You say to yourself, 'When is this gonna stop?'"

Ray Fonseca, who manned a snow shovel in the area around Fermilab's High Rise, said shoveling was the only way to keep walks clear when temperatures dropped below about 10 degrees Fahrenheit. "De-icing compounds don't melt the snow when it's really cold," Fonseca said. "You have to use a shovel."

In the Fermilab Village, the little red, orange and blue houses looked like Vermont mountain hideaways or Colorado ski lodges under their thick frosting of snow. With roads and parking lots plowed, the snow crew could turn to the less urgent tasks of clearing walkways. Steve Whiteaker shoveled a path to the front door of one Village home. He and Larry Thomas, who was operating a snow blower a few blocks away, had to rely on memory to find the buried walks to Village houses. Fortunately, they remembered most of them from summer lawn-mowing duty.

"Be sure to check the pathways to the Children's Center," Becker reminded them.

A mile or so away, Roads and Grounds crew member Jim Kalina was rescuing a low-slung car from a five-foot snowdrift. Earlier, Kalina had uncovered the vehicle's Fermilab identification sticker and determined that its physicist owner was attending a conference in Vancouver, British Columbia, where weather reports showed sun, with temperatures in the fifties.

Asked about predictions for more snow in northern Illinois in coming days, Kalina responded, "Let it come. I'm ready." ❄️



As snow drifted across the open prairie, plows cleared the 25 miles of roads on the Fermilab site.



# How to Make a

# PROTON BEAM

by Mike Perricone

**A**t \$150, the cost of the raw material for a year's worth of protons at Fermilab is approximately the same as a cup of cafeteria coffee each workday throughout the year.

The source of the protons: a bottle of hydrogen gas, obtained from a commercial supplier. It looks like a propane canister for your backyard gas grill.

Hydrogen, listed first on the Periodic Table of the Elements, is the most abundant element in the universe, the primary fuel for the fusion reactions producing the heat in the sun and all the stars. The simplest of atoms, with a single proton and a single electron, hydrogen forms a colorless, odorless, tasteless and highly explosive gas. Hydrogen gas is diatomic, meaning each gas molecule is composed of a pair of atoms.

In the Proton Source Department, Jim Lackey, Chuck Schmidt, Bob Webber and their colleagues take this simple substance and do what Fermilab always does best. They bust it apart, transforming the hydrogen gas into a beam of protons traveling at nearly the speed of light, with an energy of 8 GeV (billion electron volts).

"You could say the process of getting the protons from the hydrogen is quite inefficient," Schmidt said. "The number of useful protons we produce is about one part in a million of what we put in at the start."

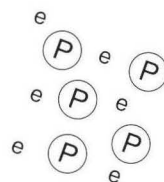
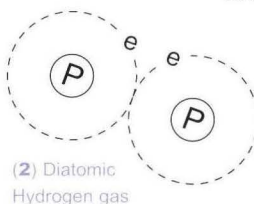
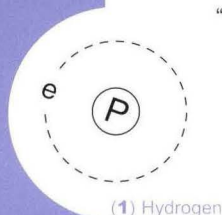
When jolted by sufficient voltage, the hydrogen atoms come apart and rearrange themselves to form ions with positive or negative charges. A gas dissociating this way in an electric field is called a plasma.

The process is analogous to chemical dissociation, where a molecule in a solution separates into charged ions (for example, NaCl into  $\text{Na}^+$  and  $\text{Cl}^-$ ). The

plasma, or ionized gas, conducts electricity, just as the ionized NaCl solution conducts electricity, and just as the gas inside a fluorescent light bulb conducts electricity.

In forming the plasma, some hydrogen atoms lose electrons and a few gain electrons. Those gaining a single electron become H-minus ions ( $\text{H}^-$ ), which are extracted from the plasma by positive voltages, formed into a beam of particles and accelerated to nearly the speed of light by the end of the proton production process.

The Cockcroft-Walton pre-accelerator, resembling a gleaming gizmo from a 1930's Flash Gordon serial, generates 750,000 volts to start the ions on their journey through the vacuum passageway. The oldest of the Lab's accelerators, the Cockcroft-Walton must be manually grounded for maintenance by a technician wielding an 18-foot wooden pole; yet it represents one of the Lab's earliest uses of fiber optics for transmitting computer information from equipment at high voltages where conventional wire can't be used.



Follow  
THE PARTICLES

First in a  
series of  
occasional  
articles.



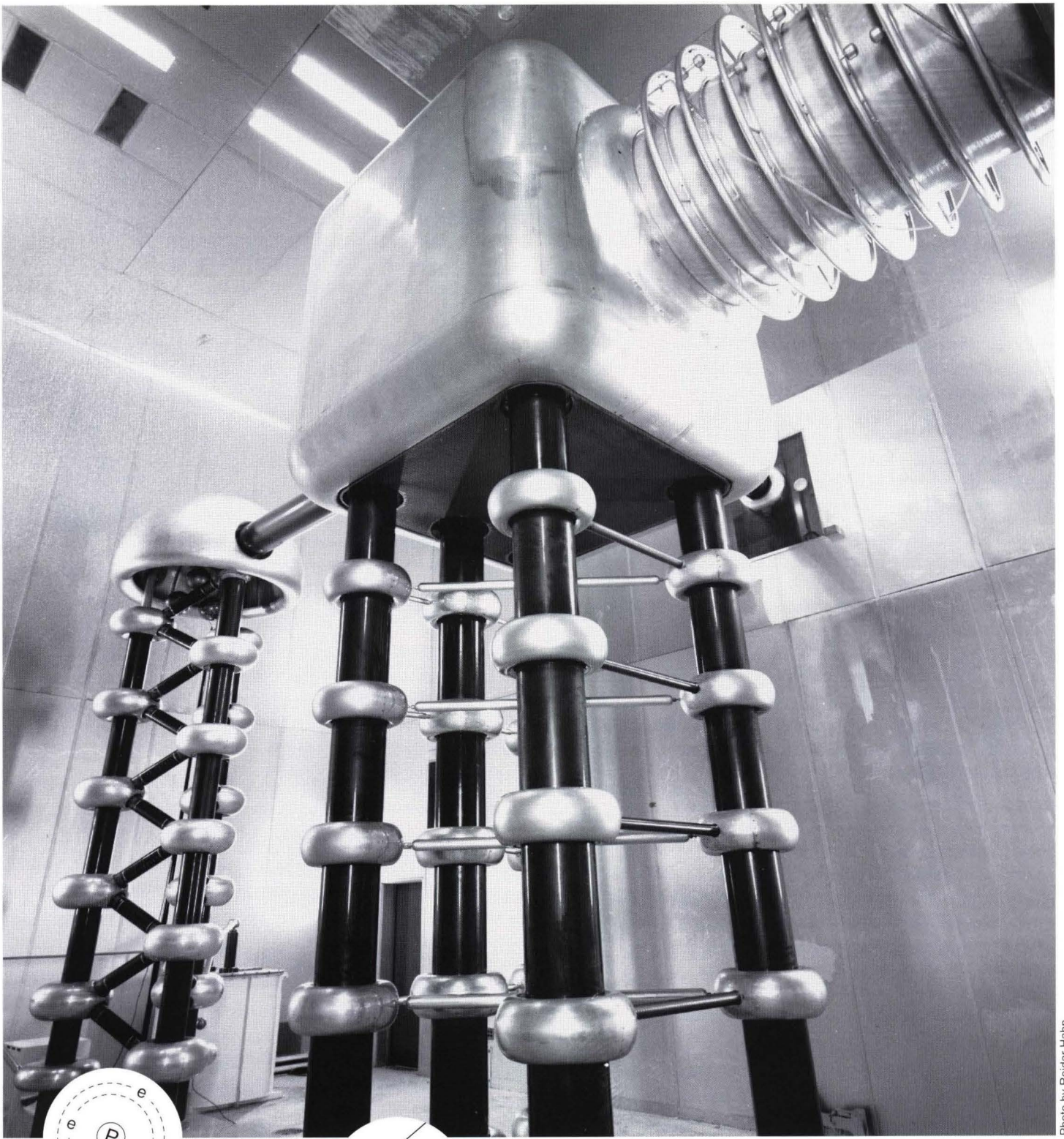
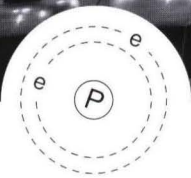
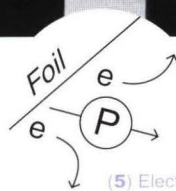


Photo by Reidar Hahn

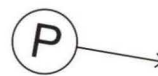
The Cockcroft-Walton.



(4) H-minus



(5) Electrons  
stripped



(6) Protons

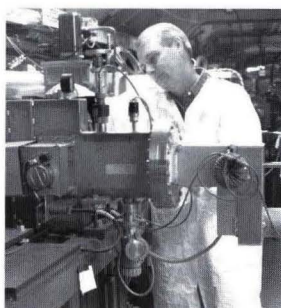
#### The Path From Hydrogen Atom to Proton Beam

A hydrogen atom (1) consists of an electron and a proton. Hydrogen gas is diatomic (2). When jolted by sufficient voltage, diatomic hydrogen gas molecules dissociate to form a plasma (3) of positively and negatively charged ions. After the H-minus ions (4) are extracted, the Cockcroft-Walton starts them on their journey through the Linac. At the entrance to the Booster, the electrons are stripped off the ions (5), leaving just protons to be accelerated through the system (6).





Chuck Schmidt invites you into the Cockcroft-Walton pre-accelerator, beginning the journey from hydrogen gas to proton beam. Jim Wendt and Ray Hren do some fine-tuning inside the apparatus.



Bob Webber at the Booster accelerator, where H-minus ions are transformed into protons and accelerated to nearly the speed of light.

When the H-minus ions leave the Cockcroft-Walton, they are moving at about 0.04 c, or four percent of the speed of light (about 7,440 miles per second). The Linac, or Linear Accelerator, immediately increases that speed by subjecting the ions to alternating voltages in a series of radiofrequency cavities spread out at increasing intervals along a 500-foot straightaway corridor.

Household voltage from Commonwealth Edison changes polarity 60 times per second. The early accelerating voltages experienced by the beam in the Linac change polarity 200 million times per second (200 megahertz, or MHz). The high frequency power comes from a large vacuum-tube amplifier called triodes, originally developed in the Cold War era of the 1950s for the NORAD (North American Air Defense) system. The final RF cavity frequency is 800 MHz, powered by even bigger amplifiers called klystrons.

Because opposite charges attract, the negatively-charged hydrogen ions must always see a positive charge attracting them to their next destination, whether it's the far end of the RF cavity they've just entered, or the entrance to the next RF cavity along the route. Their travel time from cavity to cavity is a constant five billionths of a second while their speed increases down the corridor. Since their speed is increasing and the frequency is a constant, the cavities must be spaced farther and farther apart.

The ions leave the Linac at 0.7 c (about 130,200 miles per second), with an energy of 400 MeV (million electron volts), more than 500 times their energy when exiting the Cockcroft-Walton. The Linac sends the ions into a transport line connected to the Booster accelerator, which cashes in on the ions' negative charge and produces the payoff for not accelerating positively-charged protons at the start of the process.

Starting with a beam of protons, which Fermilab did until 1977-78, meant filling the Booster's 1,600-foot circumference with only a single turn of particles

for the best operation. The switch to what's called "H-minus injection" immediately improved the Booster's intensity by allowing additional turns of protons from the negatively-charged hydrogen ions to be stacked on top of a proton beam already circulating in the machine.

At the entrance to the Booster, a magnet diverts the ions to a carbon foil 1.5 microns thick (0.0015 millimeters), weighing 300 micrograms per square centimeter (that's 300 millionths of a gram, or about  $10^{-7}$  ounces), mounted on a fork-like frame.

"Here's where the magic happens," Webber said.

The foil is so thin, it would flutter away if you breathed on it. But it's substantial enough to strip off the electrons from the hydrogen ions, leaving just the nuclei—protons—to be merged with the protons previously injected into the machine. The injection process continues until the Booster has as many protons as it can handle, or as many as it needs.

The Booster then accelerates the new proton beam in standard synchrotron manner—RF cavities imparting energy, with frequencies ranging from 38 MHz to 53 MHz; magnets bending the beam around the circular track for multiple passes through the RF cavities. The speed of the beam increases from .7 c to nearly the speed of light, the largest proportional speed boost of Fermilab's three synchrotrons (the Booster, Main Injector, and Tevatron). When the energy reaches 8 GeV, the Booster transfers the proton beam to the Main Injector; from there, the beam goes to antiproton production, to the Tevatron, and to fixed target experiments.

"This whole acceleration process in the Booster," Webber said, "lasts 1/30 of a second."

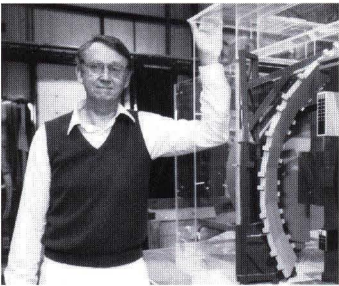
That 1/30 of a second, the origin of the discoveries and the wonder, is part of the everyday routine at Fermilab, as unassuming as a morning cup of coffee. And equally essential. ☺



# the

## The Run II Equation

There has been intense speculation here at Fermilab about the potential for discovering new and interesting physics when the Tevatron cranks up again.



Al Goshaw, spokesperson for the CDF collaboration and a particle physicist from Duke University, in North Carolina, isn't content with mere speculation. As a scientist, he has it all

worked out in—where else?—an equation.

$$\text{Physics Potential in the Next Decade at CDF} = [\text{Run I Physics}] \times A \times D \times E \times I$$

where A = accelerator improvements; D = detector upgrades; E = experience with analysis; and I = inspiration.

Goshaw has even come up with some numbers.

Accelerator improvements include an increase in luminosity, with many more collisions per second, and an increase in the production of top quarks and other elusive fundamental particles. Goshaw inserts a factor of roughly 300 here (1.5 for the increase in proton-antiproton collision energy, multiplied by 20/0.1, the increase in luminosity).

The value for D, Goshaw estimates, is about 2. He figures that with a new, more powerful three-dimensional tracking system, a new scintillating-tile end-plug calorimeter, new intermediate muon detectors, new front-end electronics, and a new pipelined trigger system that minimizes deadtime and accepts data at rates ten times higher than in Run I, the performance quality of the CDF detector has to have doubled—and that's a conservative guess.

E stands for all the experience gained in analyzing the data from Run I. According to Goshaw, CDF has done even better than predictions at measuring the properties of the top quark, the

W boson and the B hadron. "This learning process is still going on," said Goshaw. "We're refining analysis techniques and working to better use the data from the detector all the time." For E, then, Goshaw gives a factor of greater than 1, and bets that 2 would be more accurate.

For I, inspiration: well, Goshaw leaves that one to people's imagination. Inspiration, he says, comes in the form of insights gained from the sharing of ideas between CDF and the DZero collaboration, and between theorists and experimentalists, and it happens every day at Fermilab.

of

—Sharon Butler

## Garden of Physics

When the Titanic sank, did it tumble or flutter? The physics of falling leaves suggests that the ill-fated ocean liner fluttered through the water on its way to the bottom in 1912.



The physics of falling leaves is explored in\*one of many distinctive displays in the Garden of Science at the Weizmann Institute of Science in Rehovoth, Israel.

Dr. Ronen Mir told a Fermilab Colloquium that the garden's purpose is to carry an interactive message of science to the public, and that the message starts with the very structure and surroundings in the design of a museum.

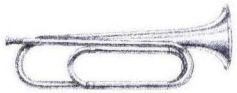
The Garden of Science incorporates many outdoor exhibits, including explanations of solar, wind and water energy and a demonstration of lunar gravity. There is also a display of "rock music," where participants can play a tune on an array of different-sized and different-tuned rocks.

Mir said The Science of Music was one of the museum's most popular programs, featuring a classical piece followed by a demonstration of the physics principles used by the various instruments to produce their unique sounds.

the



"It's a very effective outreach method," Mir said, demonstrating that a balloon affixed to the front of a horn will expand impressively when the horn is played—but it will not prevent the propagation of the sound wave, and thus will not prevent the horn's music from being heard.



The Weizmann Institute is an international research facility named for Dr. Chaim Weizmann, a chemist and the first president of the state of Israel. The Institute's motto, "making the desert bloom," extends to research ranging from environmental protection to science education to cancer therapy and detection. Currently, the Illinois Masonic Medical Center and the University of Illinois-Chicago are organizing clinical trials to test a method for non-invasive breast tumor diagnosis based on Weizmann Institute research, involving the use of Magnetic Resonance Imaging.

—Mike Perricone

## Winter Wildlife

Early one recent morning, the freezing air whitened by a vigorous flurry, physicist Peter Kasper, *a.k.a.* The Birdman of Fermilab, waded through thigh-high drifts to reach a cluster of bird feeders at the edge of Fermilab's Big Woods. Kasper was recharging the feeders with bird seed, a task he repeats most winter mornings, spending \$500 a year of his own funds to feed birds who pass the winter months at Fermilab. The feeders are a kind of avian soup kitchen for nuthatches, red-bellied woodpeckers, snow buntings and other species.



This morning, Kasper says, it is especially lucky that he turned up. The feeders were nearly empty, and among his early-morning patrons was a rare swamp sparrow, a species not often seen in the area.

"That's him," Kasper said, pointing to a dark bird with a grey breast, fluttering on the snowy ground beneath the feeder. Behind Kasper, the woods twittered with a hungry breakfast crowd.



After an unusually mild fall and early winter, Midwest weather suddenly turned cold and snowy, stranding some birds who would normally have migrated south and bringing other species to Fermilab to cope as best they can.

Lapland longspurs, Kasper said, usually winter in open cornfields in farm country, gleaning the remains of the autumn harvest. This year, deep snow has driven the longspurs into the suburbs—and into the Fermilab buffalo enclosure, where they feed on grain that the buffalo spill at their feeding area. Snow buntings and horned larks also turn up at the bison's snowy stomping ground.

As for the buffalo themselves, they remain unfazed by the cold and snow. Aeons of winters on northern plains have left them perfectly adapted for the bitterest weather. In the earliest years of the Fermilab herd, the Laboratory's herdsman attempted to coax the huge beasts into the shelter of a barn, but, barns having formed no part of bison life in the wild, the creatures obstinately refused to come in out of the cold. So be it.

"We have learned," a herdsman said, "that it's best not to argue with a buffalo."

—Judy Jackson



---

## LAB NOTES

### URA SCHOLARSHIP INFORMATION

Candidates for Universities Research Association (URA) scholarships are reminded that applications are due March 1. Applications are available from and should be returned to Human Resources, WH15SE, M.S. 124.

Scholarships are awarded on the basis of S.A.T. scores.

URA awards a number of scholarships to regular, full-time Fermilab employees' children who are currently high school seniors and who will begin a four-year college degree program next fall. The maximum amount of the scholarship is \$3,000 for tuition and fees and is renewable for four years if the student progresses in good academic standing.

Applicants will be notified regarding the scholarships in early April.

### WEATHER HOTLINE

During severe weather conditions, Fermilab employees may call the Laboratory's Weather Hot Line **840-5995** to find out if the Laboratory is open for normal operations. Information is also available at [www.fnal.gov/faw/fermilab\\_at\\_work.html](http://www.fnal.gov/faw/fermilab_at_work.html).

---

## MILESTONES

### BORN

Tessa Jo, born to Bill Barker (CD/ESD) and Mo Barker on December 29 at Provena Mercy Center.

### RETIRING

Francis Bowker, I.D. #71 on February 28, from the TD/Machine Shop. His last work day will be January 22.

LUNCH SERVED FROM  
11:30 A.M. TO 1 P.M.  
\$8/PERSON

DINNER SERVED AT 7 P.M.  
\$20/PERSON



FOR RESERVATIONS, CALL X4512  
CAKES FOR SPECIAL OCCASIONS  
DIETARY RESTRICTIONS  
CONTACT TITA, X3524  
[HTTP://WWW.FNAL.GOV/FAW/EVENTS/MENUS.HTML](http://WWW.FNAL.GOV/FAW/EVENTS/MENUS.HTML)

#### LUNCH WEDNESDAY, JANUARY 27

*Cioppino*  
*Romaine, Shaved Fontina and*  
*Black Olive Salad*  
*Profiteroles*

#### DINNER THURSDAY, JANUARY 28

*Chipotle Shrimp*  
*with Corn Cake*  
*5 Spice Duck Breast*  
*Jasmine Rice with Basil*  
*and Snow Peas*  
*Almond Cake*  
*with Ginger Sauce*

#### LUNCH WEDNESDAY, FEBRUARY 3

*BBQ Roast Pork Loin*  
*Steamed Jasmine Rice*  
*Stir Fry Vegetables*  
*Baked Apples*  
*with Calvados Cream*

#### DINNER THURSDAY, FEBRUARY 4

*Booked*

---

# F E R M I N E W S

F E R M I L A B  
A U.S. DEPARTMENT OF ENERGY LABORATORY

Editor: Sharon Butler

Assistant Editor: Mike Perricone

Design: Performance Graphics

*Ferminews* is published by Fermilab's  
Office of Public Affairs.

The deadline for the Friday, February 5, 1999, issue is Tuesday, January 26, 1999. Please send classified advertisements and story ideas by mail to the Public Affairs Office MS 206, Fermilab, P.O. Box 500, Batavia, IL 60510, or by e-mail to [ferminews@fnal.gov](mailto:ferminews@fnal.gov). Letters from readers are welcome. Please include your name and daytime phone number.

Fermilab is operated by Universities Research Association, Inc., under contract with the U.S. Department of Energy.

☆ U.S. GPO 1999--746-882



## CLASSIFIEDS

### FOR SALE

■ '91 Accord SE (special edition), 103K miles, teal w/tan leather, very good condition. Auto trans, sunroof, power windows, new ac, radio w/cd, new tires 11/97. \$6,000 obo. Diane x5160 or [sellinger@fnal.gov](mailto:sellinger@fnal.gov).

■ '90 Mazda RX7 Turbo II, white w/black interior, power everything. Bra, Sunroof, Air, 12 Disc CD, 2 subs, 12 speakers, new tires, brakes, clutch. 77K miles, 42K on engine. Love it but must sell! \$7,500 x5732, (630) 820-1258.

■ '84 Ford Tempo, 4 dr, auto trans, good transportation, asking \$600 obo. Call Daniel x3604 or [daniel@fnal.gov](mailto:daniel@fnal.gov).

■ Hewlett-Packard VECTRA VL7, Pentium II 233 MMX 4.3GB-HD 32MB 24X W/NT 4.0 new, 3 year HP warranty, \$900 obo. Call (630) 202-6881.

■ Pentium 100, 80MB RAM, 2.9GB HD, 2MB video, 15" high-res monitor, CD, SoundBlaster AWE32, TV tuner card, 14.4 fax/modem, original manuals. Software (hundreds of dollars) include Win98, Office 97 Pro, PhotoShop, Acrobat, Partition Magic, MathCad, Cash Graph, MS Street Maps, First Aid, many games, & more, asking \$550. Call Bill x4597 or (630) 983-0279, or [ng@fnal.gov](mailto:ng@fnal.gov).

■ Thinking about bringing a dog or cat into your home? Please consider H.E.L.P. (Homes for Endangered & Lost Pets). H.E.L.P. is a state-licensed, not-for-profit corporation with many animals living in foster homes in surrounding areas who are waiting to be adopted. Call (630) 879-8500 for cats, (630) 879-5611 for dogs.

## CALENDAR

### JAN 22

Fermilab International Film Society presents: *The Taste of Cherry* (*Ta'm e Guilass*). Dir: Abbas Kiarostami, (Iran, 1997, 95 mins.) Film at 8 p.m. in Ramsey Auditorium, Wilson Hall, \$4. (630) 840-8000.

### JAN 26

Academic Lectures on CP Violation: *Beauty*, Joel Butler, Curia II at 11 a.m.

### JAN 30

Fermilab Art Series Presents: *Huun-Huur-Tu: Throat Singers of Tuva*, \$19 Performance begins at 8 p.m., Ramsey Auditorium, Wilson Hall. For more information or reservation call (630) 840-ARTS.

### ONGOING

NALWO coffee, Thursdays, 10 a.m. in the Users' Center, call Selitha Raja (630) 305-7769. In the barn, International folk dancing, Thursdays, 7:30-10 p.m., call Mady (630) 584-0825; Scottish country dancing Tuesdays, 7-9:30 p.m., call Doug, x8194. English classes on Tuesdays at the Users' Center. Beginners from 9-10 a.m. & intermediate students, 10-11 a.m. Fee of \$ 4 per morning. Students welcome to attend both classes. Lessons taught by Rose Moore (630) 208-9309.



F E R M I L A B

A U.S. DEPARTMENT OF ENERGY LABORATORY

Office of Public Affairs  
P.O. Box 500, Batavia, IL 60510

Bulk Rate  
U.S. Postage

**PAID**

Bartlett, IL  
Permit No. 146